

RATTLETT BASKETBALL GUIDE 1989-90

FLORIDA A&M'S YOUNG GUNS AIM FOR SUCCESS



RATTLERETTE QUICK FACTS

SCHOOL NAME Florida A&M University
 LOCATIONS Tallahassee, Florida
 ENROLLMENT 7,300 (Fall 1989)
 MASCOT Rattlerettes
 COLORS Orange and Green
 AFFILIATION NCAA Division One
 CONFERENCE New South Women's
 BASKETBALL ARENA Gaither Athletic Center
 Capacity 3,365
 PRESIDENT Dr. Frederick Humphries
 ATHLETIC DIRECTOR Dr. Walter Reed
 HEAD COACH Mickey Clayton
 Years at FAMU 12 Years
 Record At FAMU 194-134
 Career Record 194-134
 ASSISTANT COACHES Ralph Coleman,
 Pamela Reilly
 WOMEN'S TRAINER Akima Abrakata
 BASKETBALL OFFICE (904) 599-3272; 3528
 Best Time To Call 10 a.m. to 2:30 p.m. EST
 SPORTS INFORMATION Alvin Hollins, Director
 Assistants Reggie Butler, Tyrone Clark
 MARKETING DIRECTOR Herb Reinhard
 INFORMATION
 OFFICE (904) 599-3206; 3200; 3878
 1988-89 RECORDS 11-17 Overall; 5-7 in NSWC
 LETTERWINNERS LOST Six (6)
 LETTERWINNERS BACK Six (6)
 STARTERS LOST Two (2)
 STARTERS BACK Three (3)

REVISED 1989-90 FLORIDA A&M WOMEN'S BASKETBALL NOVEMBER

Fri-Sat 24-25 in Central Michigan University Tournament

DECEMBER

FRI-SAT 1-2 RATTLERETTE INVITATIONAL
 TOURNAMENT
 WED 6 UNIVERSITY OF MIAMI (7:00)
 Sat 9 at University of South Alabama
 Mon 11 at South Carolina State College
 Sat 16 at Augusta (Ga.) College

JANUARY

SAT 6 @GEORGIA SOUTHERN COLLEGE (7:00)
 SAT 13 @GEORGIA STATE UNIVERSITY (7:00)
 MON 15 @MERCER UNIVERSITY (7:00)
 THU 18 MORGAN (Md.) STATE UNIVERSITY
 (6:00-DH)
 Sat 20 @at Florida International University
 Mon 22 at University of Miami
 WED 24 UNIVERSITY OF SOUTH ALABAMA
 (7:00)
 Sat 27 @at University of Central Florida
 Mon 29 @at Stetson University

FEBRUARY

Sat 3 at Bethune-Cookman College (6:00-DH)
 Mon 5 @FLORIDA INTERNATIONAL
 UNIVERSITY (6:00-DH)
 THU 8 SOUTH CAROLINA STATE COLLEGE
 (7:00)
 Sat 10 @at Mercer University
 Mon 12 @at Georgia State University
 THU 15 FLORIDA STATE UNIVERSITY (7:00-CC)
 SAT 17 @STETSON UNIVERSITY (6:00-DH)
 MON 19 @UNIVERSITY OF CENTRAL FLORIDA
 (6:00-DH)
 Sat 24 @at Georgia Southern College
 SUN 25 BETHUNE-COOKMAN COLLEGE
 (DH-5:00-CC)

MARCH

Thu-Sat 1-3 in New South Conference Tournament

[CC]-Civic Center in Tallahassee; [DH]-Doubleheader;
 [@]-New South Conference games



FLORIDA A&M's RATTLETETTE BASKETBALL 1989-90 MEDIA GUIDE

CONTENTS

Contents/Credits/Cover Story	1
Rattlerette Outlook	3
Rattlerette Profiles	5-13
Head Coach Mickey Clayton	15
Rattlerette Coaching Staff	16
Support Staff	17
Series Records vs. All Opponents	18
The New South Women's Conference	19
Opponent Profiles	20-25
CENTERSPREAD - Rattlerette Team Rosters	22-23
1988-89 — A Year In Review	26
Final Team Statistics and Results	27
Rattlerette Basketball History	28
All-Time Records	29-30
Rattlerette Scores	31
The Rattlerette Invitational	32
All-Time Rattlerette Roster	33
Rattlerette Success Stories	34
Florida A&M's Athletic Legacy	35-37
Florida A&M University	39
Campus Scenes From Florida A&M	40-41
Dr. Frederick S. Humphries - President	42
FAMU's Athletic Administration	43
Athletic Support Staff/Directory	44



COVER STORY: FAMU'S "YOUNG GUNS" is the theme for the 1989-90 campaign and on the cover are some of those young ladies who should make a big difference in the Rattlerettes' fortunes this year. Standing (L to R) are Sherrall Bass, Shelly Boston, Sandra Locklear and Donyale Ferguson. Seated (L to R) are Polly Innerarity and Sonja Bentley. The "youngest gun" of all, Myah Clayton, daughter of head coach Mickey Clayton is seated with Bentley and can also be seen in a cameo appearance on the inside front cover of this year's media guide. The "YOUNG GUNS" idea originated with Coach Clayton.

NOTE TO MEDIA

This Florida A&M University Rattler Basketball Guide is written for the express purpose of providing members of the working news/sports media fingertip reference information on the 1989-90 team.

Any feature information, need to acquire photos, statistics or set up of interviews can be realized by contacting the Office of Sports Information at (904) 599-3206; 3200 or 3878.

At all games, complete halftime and final boxes will be available. Scores will be phoned in to Sports-Ticker and Sports Network and wire service stories will be filed 25-30 minutes following the game's conclusion.

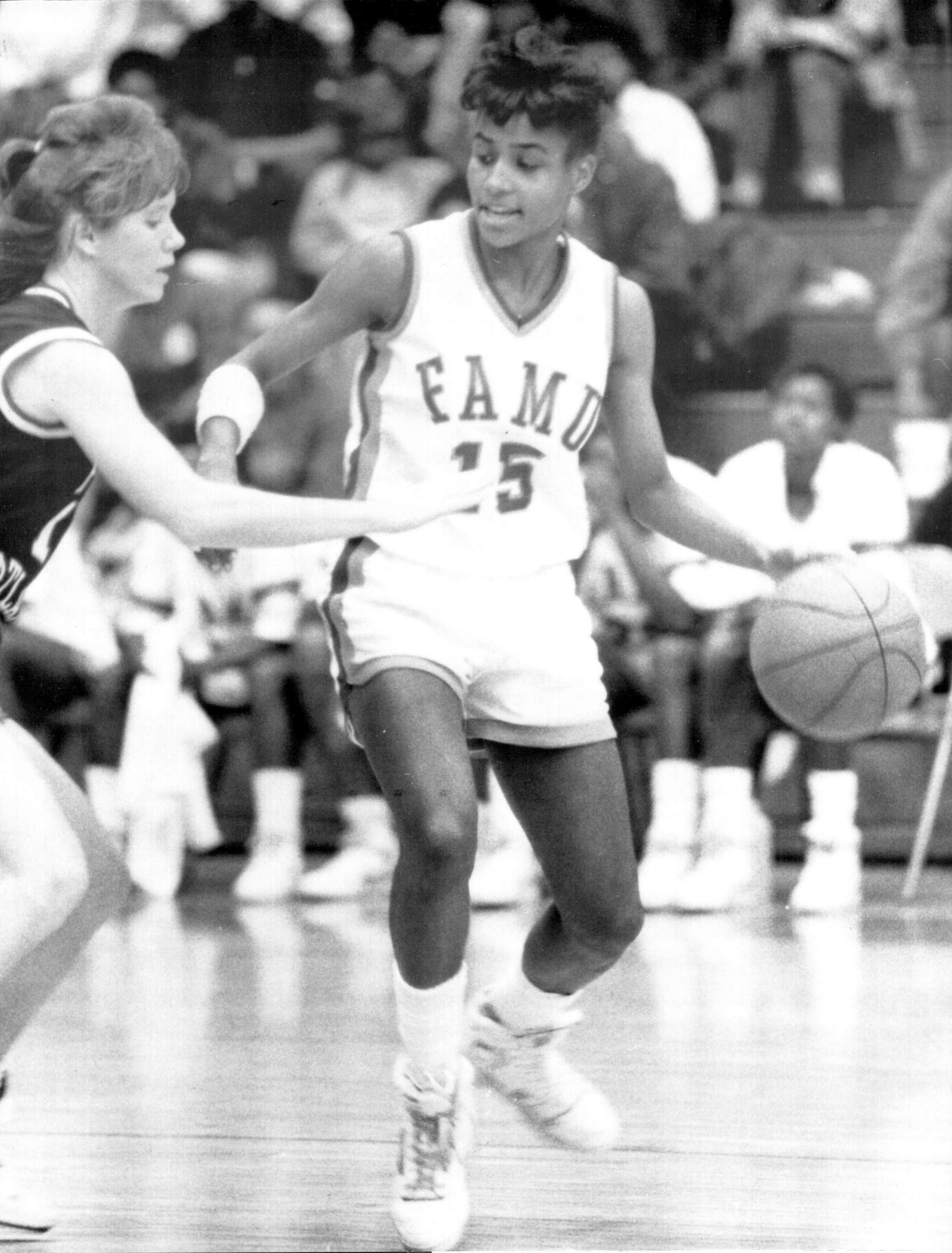
Fax services will be available upon request. Credentials may be requested by calling Sports Information at the numbers above.

CREDITS

Editor	Alvin Hollins, Jr.
Contributing Editors	Reggie Butler
	Marcia E. Chandler
	Larina "Mickey" Gillette
Layout	Alvin Hollins, Jr.
Cover Idea and Concept	Coach Mickey Clayton
Photographic Services	Keith L. Pope
	University Photographer
Graphics, Printing and Binding	PACE PRINTING
	Pensacola, FL

SPECIAL ACKNOWLEDGMENTS

The Rattlerette Basketball program wishes to thank **WESTERN WORLD of Tallahassee, Fla.**, for its' kind use of the western-style outfits used to photograph this year's team.**Special thanks go to Mrs. Emma Wynn**, who was gracious enough to allow the team and staff to hold its' photo session at her family's farm north of Tallahassee.



RATTLERETTE BASKETBALL OUTLOOK 1989-90

“Young Guns Shooting For Success”

After last year's 11-17 finish, look for the Rattlerettes of Florida A&M to shoot for success in line with their theme: “Young Guns Shooting For Success.”

To do that - have success - they'll have to go against a challenging schedule, which features Miami (Fla.), South Alabama, Florida State, Florida International, South Carolina State, plus tournament appearances in the Central Michigan Invitational (featuring CMU, FAMU, Wisconsin-Green Bay and Illinois-Chicago) and their own Rattlerette Invitational (featuring FAMU, Prairie View, Alabama State and Albany (Ga.) State).

Of course, the Rattlerettes must also face a rugged New South Conference slate, which will pit them against Florida International, Stetson, Central Florida, Georgia Southern, Georgia State and Mercer (Ga.). For the Rattlerettes, a return to the upper echelon of the league is a major goal, since their 11-17 record included a 5-7 league standard, marking their first finish below second in their brief tour in the youngest (four years) of Division One women's conferences.

Coach Mickey Clayton (194-134) begins his 13th season at the helm and would certainly like to win not only his 200th career victory sometime during the year, but make this year a winning one to make that milestone even more meaningful.

He and his able staff will have to mold another youthful lineup of players into fighting form for the coming year, but unlike last season's club, which suffered as much from lack of on-floor leadership as they did talent, the 1989-90 edition of Rattlerette Basketball will have some battle-tested leaders to keep this cadre of young guns blazing away.

The Rattlerettes, picked by New South coaches and SIDs to finish third in the league, behind Florida International, last season's regular season titlists and Stetson, the tourney winners, will have a preseason all-star, junior guard DONYALE FERGUSON (5-8, Miami, Fla.), set to lead them.

The former all-city guard from Central High in

Miami led the club in scoring (13.7 points), while dishing out 90 assists, including a school record 19 in one game, while shooting .782 from the foul line.

Shelly Boston, a 5-8 sophomore guard, who appears too frail for the rigors of college basketball, showed tremendous strength last season, averaging 10.5 points per game, starting all 28 games, leading the club in assists (121), steals (104), three-point goals (26) and minutes played (802).

Boston, who hails from Seattle, earned Black College All-America honors a year ago, while earning honorable mention in the New South Conference All-star balloting.

Other returning veterans include 6-3 sophomore center Tara Baker (4.5 points, 3.0 rebounds); 6-2 center-forward Polly Innerarity (9.6 points, team-high 6.0 rebounds); forward Sandra Locklear, a 5-9 junior, who averaged 7.4 points and 4.2 rebounds and sophomore forward Camille Smith (6-0), who scored at a 5.0 clip and rebounded on a 3.1 level in limited playing time.

Clayton, known for his recruiting prowess, hopes that this year's crop of incoming help will be the difference in kicking the record over .500.

In the backcourt, Ferguson and Boston can look for help from New Jersey native Kaali Cohen (5-7, Fr., Burlington, N.J.), Telana Courseault (5-7, Fr., Dorsey High) from Los Angeles, Calif. and Demetria McMillan (5-8, Fr., Marianna, Fla.)

Up front, where the Rattlerettes sorely needed depth and talent last year, look for impact performances from Atlanta, Ga. native Sherrie Barnes (5-10, Fr., Southside High); Sherall Bass (6-1, Fr., Las Vegas, Nev., Eldorado High); highly-regarded Sonja Bentley (6-1, Fr., Forward, Titusville, Fla., Astronaut High); Tampa native Andrea Harmon (5-10, Fr., Tampa Bay Tech).

If Clayton can smoothly blend the incoming talent with that seasoned group already on hand, look for his “young guns” to blaze their way to success in 1989-90.



MEET THE RATTLERETTES

TARA BAKER

Center

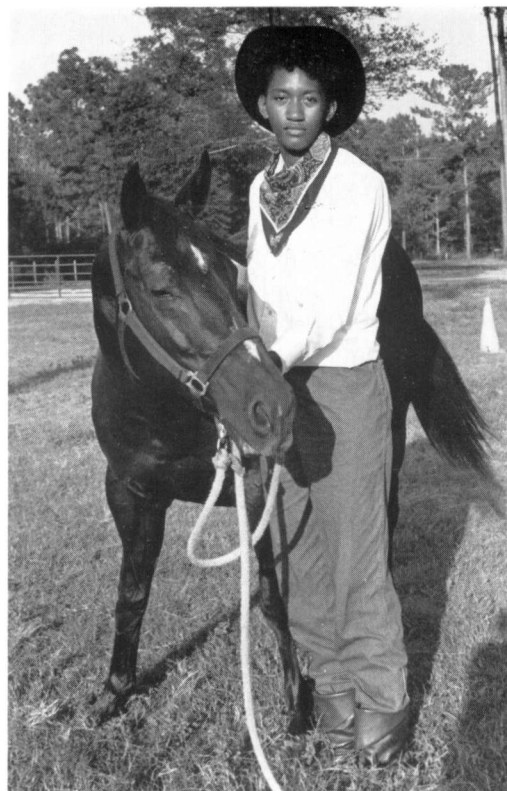
6-3, Sophomore, Atlanta, GA
Forest Park HS

This tall, potentially dominant athlete, has yet to fully adjust to college ball, something only playing time will remedy... BAKER had 31 blocked shots last season, while averaging 3.0 rebounds per game (28 games) and 4.5 points... Had a season-high 10 rebounds against South Carolina State (Jan. 11)... Averaged 13 blocked shots per game in high school, as well as eight (8) points and seven (7) rebounds per game.

CLAYTON ON BAKER: "Tara has good potential, but in order to improve, she must get stronger and more physical."

BAKER'S CAREER STATISTICS

YEAR	GP	FGM-FGA	PCT.	3 pt.		FTM-FTA	PCT.	REB-AVG	AS	TO	BS	ST	PTS-AVG	MINS
				FGM-FGA	PCT.									
1988-89	28	50-119	.420	0-0	.000	26-44	.590	84-3.0	11	30	31	14	127-4.5	434



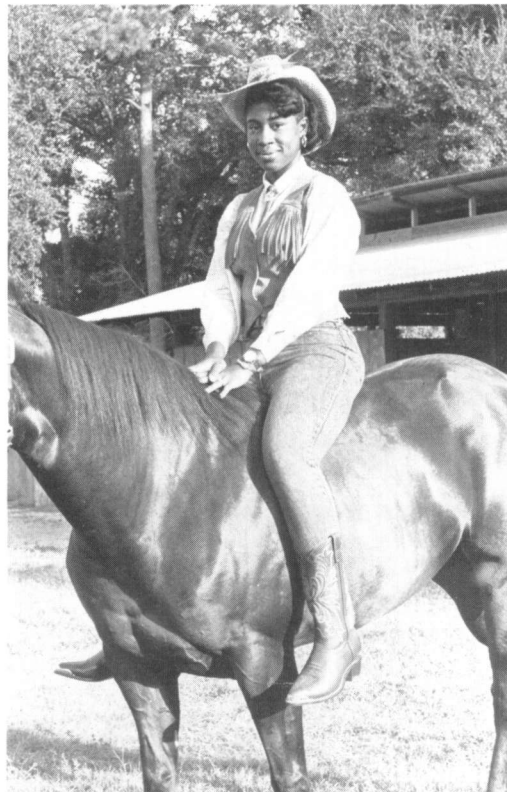
SHERRIE BARNES

Forward

5-10, Freshman, Atlanta, GA
Southside HS

A three-time MVP for the basketball team at Southside Comprehensive High, BARNES will bring her consummate scoring skills to Florida A&M, which could really use them after last season... BARNES averaged 24.0 points, 12 assists and eight rebounds per game, earning All-City honors and a spot on the AAU team. She also led the Decatur Summer League in scoring and was its' MVP three years... A multi-talented athlete, BARNES also played tennis, in which she ranked eighth in the state, with a 15-1 record as a senior, winning the conference title, but losing in the semi-finals.

CLAYTON ON BARNES: "Sherrie is an excellent shooter, who has to work on the defensive game. She should help us at the small forward spot."



MEET THE RATTLERETTES



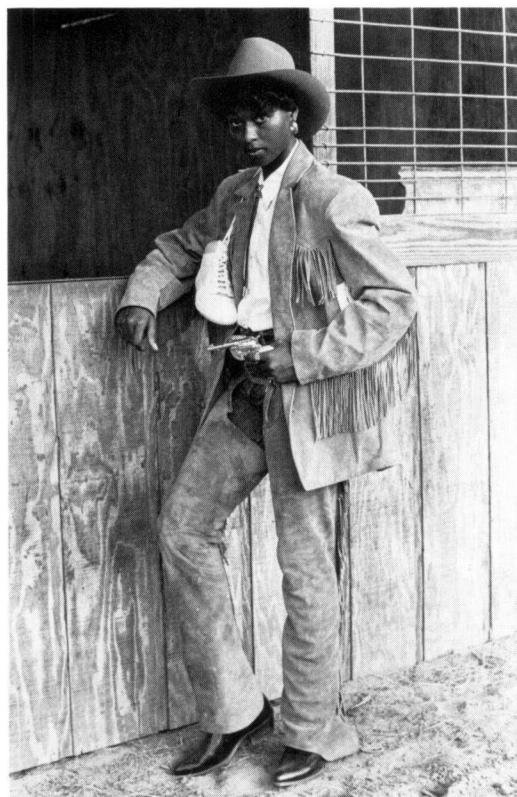
SHERRALL BASS

Center

6-1, Freshman, Las Vegas, NV
Eldorado HS

A PARADE ALL-AMERICA (1988-89) honoree, BASS comes East to Florida A&M, where she is expected to make an impact on the Rattlerettes' front line situation... BASS averaged 18 points and 18 rebounds per game for Eldorado High School, where she was two-time MVP and the team's best defensive player... Was also the co-league MVP last season and as a junior was honorable mention USA TODAY High School All-Star... A member of the National Honor Society, BASS had a 3.67 grade point average.

CLAYTON ON BASS: "Sherrall could help us in the middle immediately. Although she needs to get stronger, she is an aggressive rebounder, who has an effective mid-post jumper."



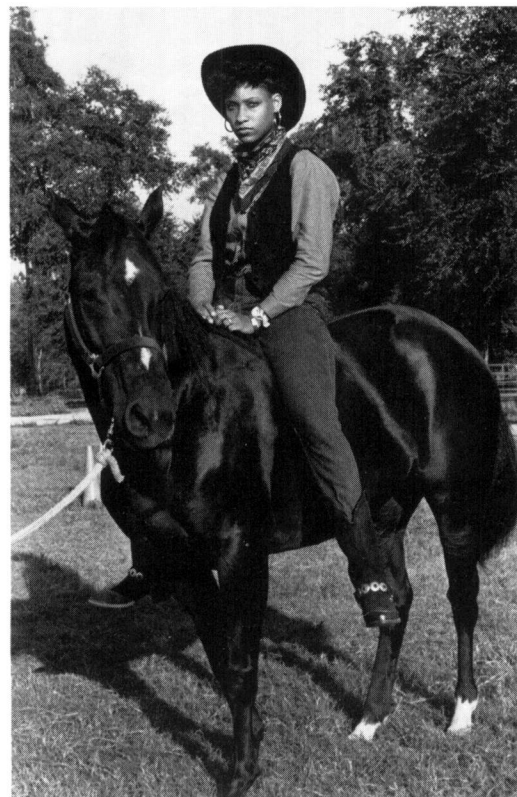
SONJA BENTLEY

Forward

6-1, Freshman, Titusville, FL
Astronaut HS

A multi-talented athlete, who starred in four sports, BENTLEY will bring her abilities to the Rattlerette basketball team, where she could be an immediate impact player... BENTLEY, related to the Indianapolis Colt running back ALBERT BENTLEY, participated in track, basketball, volleyball and softball... As a senior, BENTLEY was the MVP in basketball and volleyball, while representing Astronaut High in the state track meet.

CLAYTON ON BENTLEY: "Sonja is very physical and aggressive, and needs to develop a better shooting touch to be consistent from the floor."



MEET THE RATTLERETTES



SHELLY BOSTON

Guard

5-8, Sophomore, Seattle, WA
Garfield HS

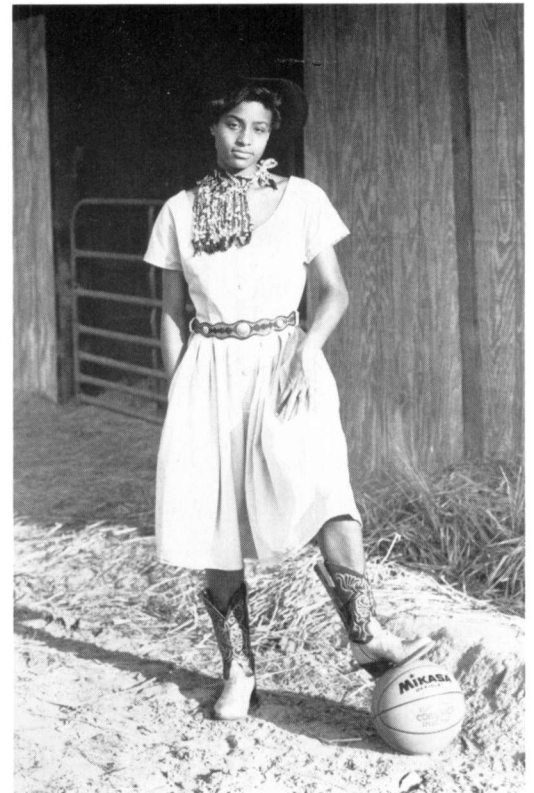
BOSTON earned Black College All-America honors last year, for her overall play, which was one of the highlights of an off-year for Rattlerette Basketball... The former Garfield High basketball MVP demonstrated why she was so highly regarded as a freshman for FAMU, averaging 10.5 points, 4.4 rebounds, while leading the club in steals (104), assists (121) and minutes played (802)... She set a single-season school mark for three-point goals (26), with six (6) of those coming against Stetson (2-20-89), when she scored a season-high 33 points... Was honorable mention All-NSWC.

CLAYTON ON BOSTON: "An excellent defensive guard, Shelly is being moved to the two-guard spot, where she can rebound more effectively. She's a good worker, who should improve each year."

BOSTON'S CAREER STATISTICS

3 pt.

YEAR	GP	FGM-FGA	PCT.	FGM-FGA	PCT.	FTM-FTA	PCT.	REB-AVG	AS	TO	BS	ST	PTS-AVG	MIN
1988-89	28	105-301	.348	26-68	.382	61-90	.677	123-4.4	121	107	1	104	296-10.5	802



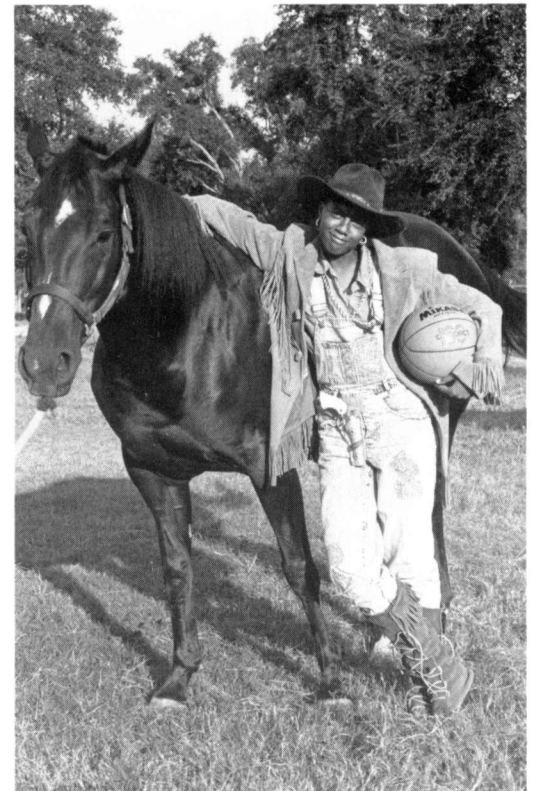
KAALI COHEN

Guard

5-6, Freshman, Burlington, N.J.
Burlington City HS

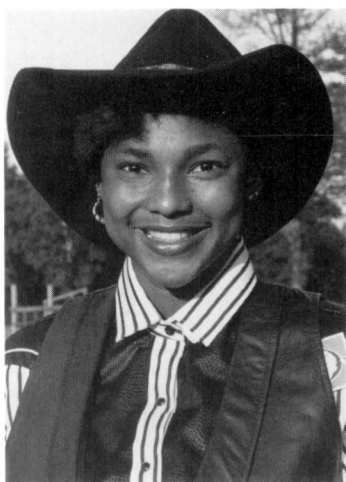
COHEN will provide some able assistance in the backcourt, where depth could be a concern for the Rattlerettes... COHEN averaged 15.6 points, five assists and five steals per game for Burlington City High School. Was named All South Jersey and All Group II South Jersey... Was a first-team all-county (1st team) pick and was her team's MVP, while being named to the BURLINGTON TIMES AND COURIER POST All-City team... A track performer as well, COHEN ran the 400 meter dash.

CLAYTON ON COHEN: "Kaali has potential, but she must learn to be under control to make the transition to point guard on the collegiate level."





MEET THE RATTLERETTES



TELANA COURSEAULT

Guard

5-7, Freshman, Los Angeles, CA
Dorsey HS

This talented newcomer from the West Coast could make an impact this season in the Rattlerette backcourt, especially with her speed and quickness. A track star at Dorsey High School, as well as a basketball player, COURSEAULT could put her multiple talents to work for Florida A&M... In basketball, she was voted Dorsey's best defensive player, leading the team in steals and assists, while also being voted the team's MVP... In track, she ran in both the 100 meter dash and on the 1600 meter relay team.

CLAYTON ON COURSEAULT: "Telana is an aggressive basketball player, who plays with reckless abandon... Will have to channel some of her aggressiveness to be effective in our defensive schemes."



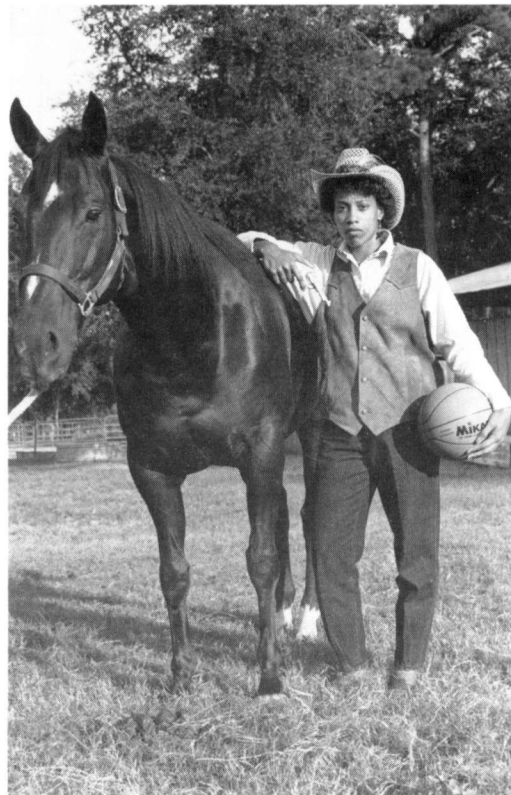
DONYALE FERGUSON

Guard-Forward

5-7, Junior, Miami, FL
Central HS

The team's top scorer last season, FERGUSON averaged 13.7 points per game, while shooting over 78 percent (108 of 138) from the foul line, but scoring was not the only way the Miami native contributed to the efforts of a young team... The former All-City, All-Dade County and All-State prep performer from Central High School, also displayed badly-needed leadership skills last season and she also demonstrated a flair for the dramatic, setting a school record in assists in a single game, with 19, against Florida Atlantic in the finals of the Rattlerette Invitational... In fact, her 39 assists in the tournament was a tourney record and she finished third on the club in assists (90) and second in steals (75), while averaging 3.9 rebounds per game.

CLAYTON ON FERGUSON: "Donyale has worked hard in the off season on her individual defense and should be much more effective playing the point guard spot."



FERGUSON'S CAREER STATISTICS

3 pt.

YEAR	GP	FGM-FGA	PCT.	FGM-FGA	PCT.	FTM-FTA	PCT.	REB-AVG	AS	TO	BS	ST	PTS-AVG	MIN
1988-89	28	140-346	.404	1-9	.111	108-138	.782	111-3.9	90	69	2	75	384-13.7	620

MEET THE RATTLERETTES



ANDREA HARMON

Forward

5-10, Freshman, Tampa, FL
Tampa Bay Tech

Another talented, hard-working player who could really bolster the Rattlerette frontline situation, HARMON comes from Tampa Bay Tech, where she led her team in rebounding with a robust 11.0 rebounds per game, while averaging 14.3 points per outing... She earned All-Western Conference honors as well as a spot in the East-West All-Star game... Was member of the Spanish Honor Society and the Fellowship of Christian Athletes.

CLAYTON ON HARMON: "Andrea needs to develop more consistency in her offensive game, but she's a hard worker, who will improve."



POLLY INNERARITY

Center

6-1½, Sophomore, Hartford, CT
Prince Tech

This multi-talented athlete showed flashes of brilliance from the opening tipoff in the Lady Kat Classic at the University of Kentucky last November, leading the team in both scoring and rebounding in a tournament split of games with Radford (Va.) University and American (D.C.) University... Against Radford, she scored 21 points and had 14 rebounds, then against American she scored 20 points and had nine caroms... Polly finished the season as the club's top rebounder (6.0), while averaging 9.6 rebounds per game... In the team's regular season finale against Georgia Southern, this physical youngster had a season-high 16 rebounds... A four-sport letterwinner in high school (volleyball, track, basketball and softball), INNERARITY averaged 32 points and 20 rebounds as a senior at Prince Tech, earning All-State honors as a junior and senior.

CLAYTON ON INNERARITY: "Polly has to learn to be more consistent. She has the tools to be an excellent player, just needs to want it more."



INNERARITY'S CAREER STATISTICS

3 pt.

YEAR	GP	FGM-FGA	PCT.	FGM-FGA	PCT.	FTM-FTA	PCT.	REB-AVG	AS	TO	BS	ST	PTS-AVG	MINS
1988-89	28	111-259	.428	0-0	.000	49-96	.510	169-6.0	6	38	29	30	271-9.6	570

MEET THE RATTLERETTES



SANDRA LOCKLEAR

Forward

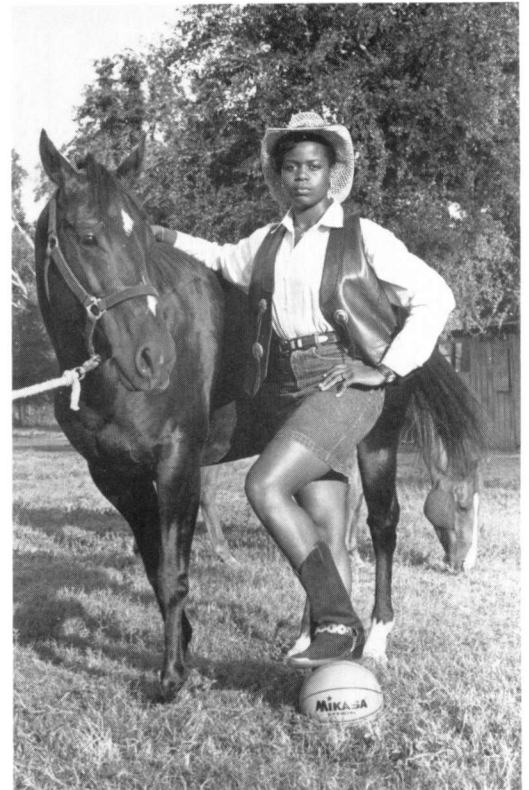
5-9, Junior, Merritt Island, FL
Merritt Island HS

An unsung heroine during last year's trying season, LOCKLEAR proved valuable both coming off the bench and as a spot starter... The Merritt Island native averaged 7.4 points and 4.2 rebounds per game, leading the team in rebounding in five different games... She had 22 points and nine rebounds against the University of Miami in Tallahassee in January... As a prepster at Merritt Island High, LOCKLEAR was Most Valuable Player on all three teams she played on her senior year, basketball, softball and volleyball.

CLAYTON ON LOCKLEAR: "Sandra is a hard-worker, whose biggest asset is her defensive play and her ability to play in the transition game."

LOCKLEAR'S CAREER STATISTICS

3 pt.														
YEAR	GP	FGM-FGA	PCT.	FGM-FGA	PCT.	FTM-FTA	PCT.	REB-AVG	AS	TO	BS	ST	PTS-AVG	MINS
1987-88	27	27-63	.429	N/A		10-26	.385	59-2.2	26	26	4	20	64-7.4	N/A
1988-89	28	91-185	.492	0-0	.000	37-60	.616	118-4.2	6	38	29	30	207-7.4	543
2 years	55	118-248												



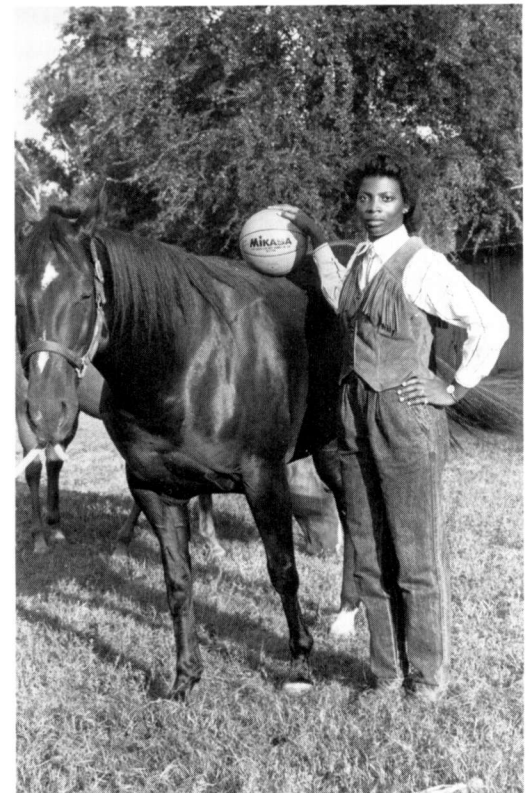
DEMETRIA McMILLAN

Forward

5-8, Freshman, Marianna, FL
Marianna HS

A talented newcomer who could play either big guard or small forward with equal skill, McMILLAN could be an immediate impact player for Clayton and Co. this season... An All-County selection in basketball at Marianna High, McMillan averaged 21 points, five assists, three steals and 5.6 rebounds per game. For her efforts as a senior, she earned the team's MVP award, as well as the team's Top Offensive Player and the Brains and Brawn Awards... Was a member of the National Honor Society, with a 3.1 GPA.

CLAYTON ON McMILLAN: "Demetria is an excellent athlete, who should see time at the small forward and big guard spots. She can run the floor well, but needs to improve her ballhandling."





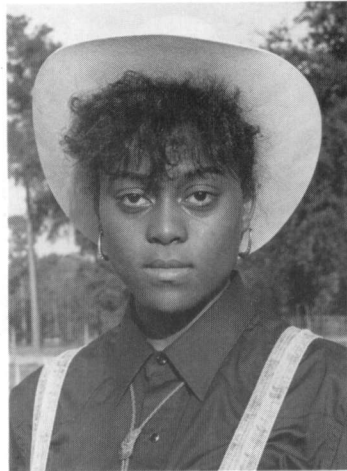
MEET THE RATTLERETTES

CAMILLE SMITH

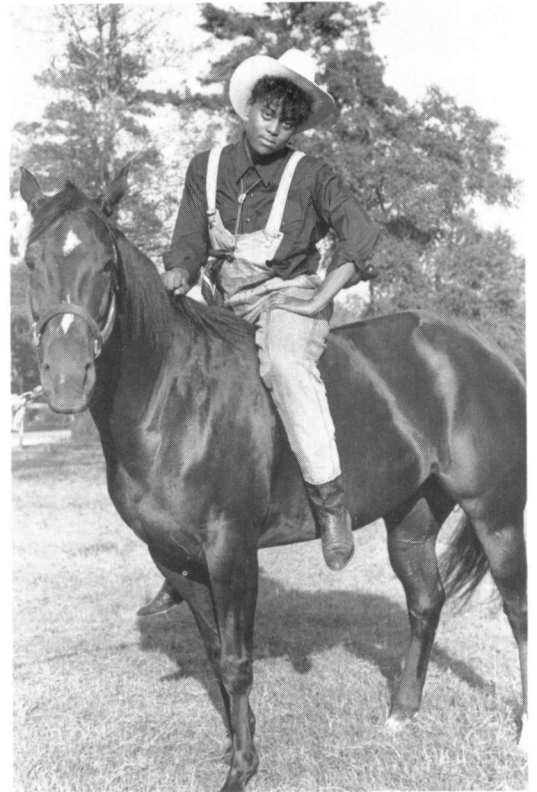
Forward

6-0, Sophomore, Kent, OH
Roosevelt HS

SMITH is a talented youngster, who could become a mainstay in the Rattlerettes' plans in 1989-90 if she can become more consistent... The tall Ohio native averaged 10 rebounds, 12 points and five assists as a senior at Roosevelt High School (1988) in Kent, Ohio... As a freshman, Smith averaged 5.0 points and 3.1 rebounds per game, collecting her season high in rebounds, 11, against Georgia Southern in the opening round of the New South Conference Tournament... She scored 18 points, her season's best, against Central Florida in their January appearance in Tallahassee.



CLAYTON ON SMITH: "Camille can play either forward spot, but has to learn to run the floor better at the small forward spot, or rebound better at the power forward spot to be a contributing factor."



SMITH'S CAREER STATISTICS

_____ 3 pt. _____													
YEAR	GP	FGM-FGA	PCT.	FGM-FGA	PCT.	FTM-FTA	PCT.	REB-AVG	AS	TO	BS	ST	PTS-AVG
1988-89	28	62-159	.389	0-0	.000	18-32	.562	89-3.1	25	35	4	12	140-5.0
													391

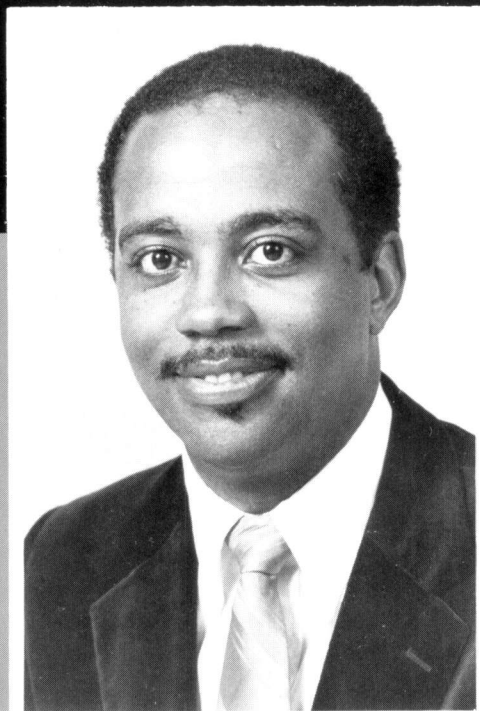




MICKEY CLAYTON

HEAD WOMEN'S BASKETBALL COACH

By Marcia E. Chandler



Brash. Hungry. Competitive. Winners. All words that describe this year's crew of Rattlerettes. So, it is fitting that this year's theme is "Young Guns: Shooting for Success."

"Every now and then, when developing a theme for the season, we come up with one that is uniquely different and also applies, in this case to the youth of our team," says Head Coach Mickey Clayton.

With the start of the 1989-90 season, Clayton and his young guns are out to blaze a trail into the next decade.

Though a young team, Clayton has big plans for them.

"We will not try to use youth as a crutch," he says. "Hopefully, youthful enthusiasm will turn out to be a positive aspect for our team."

Clayton begins his 12th year at FAMU where he has garnered an impressive 194-134 career mark at his alma mater (1975) as women's basketball coach.

He returned to FAMU in 1977, with no recruiting budget, no time available to recruit, and a crew of mostly walk-on athletes. He finished his first season with a mark of 4-15.

Things changed in 1978-79 when Clayton, with some real recruits and some semblance of a budget finished the season with a much-improved 14-11. After that year, the Rattlerettes were competitive with the best in Division Two as well as Top 20 teams throughout the nation.

Much of the program's national exposure came with games against opponents like Louisiana Tech, Auburn, Minnesota, Mississippi State, Georgia and Alabama. In fact, FAMU has wins against Auburn, Minnesota, and Mississippi State and lost a heartbreaking five point, 61-56, decision to Tech four seasons ago.

Since then, most of the Top 20 school and other Division One Schools have steered clear of Clayton and his cadre. But the tall, veteran of the sidelines continues to work hard to maintain year after year the tradition of "up-tempo basketball with pressure defense."

A former Rattler cager himself, Clayton has brought the same competitive spirit to his role as women's coach. His ultimate goal has been to make FAMU a national power, a goal he and his staff still seek to realize. But to the Rattlerette coaching staff, basketball is more than just a sport.

"We try to use basketball as an instrument to teach young ladies about life."

Last season, the first under .500 since the 1977-78 season, provided a good example of the lessons learned, both by Clayton and by his team.

"I have to learn to be more patient, realize some of the limitations our young ladies may have and respect the effort they give," Clayton says. "There were some things I did not handle well. Hopefully, I've learned from that."

In spite of the adversity the team faced, Clayton appreciated the mature way his team stuck together.

"I'm proud of the way they continued to believe in themselves and the system. I love them for that."

Besides internal hard times, Proposition 42 and 48 affected Clayton's recruiting strategies.

Continued on page 16

THE CLAYTON YEARS

1977-78	4-15
1978-79	14-11
1979-80	18-11
1980-81	18-11
1981-82	18-11
1982-83	15-11
1983-84	19- 8
1984-85	19- 9
1985-86	21- 8
1986-87	16-13
1987-88	21- 9
1988-89	11-17
12 Years	194-134

“We take fewer chances on Prop 42 and 48 students because we have lost young ladies to these rules,” he explained. “We still recruit these students if we feel they can successfully handle academics in college. After all, our purpose is to educate and teach.”

“On a personal note, I have no problem with the attempt to enhance academic requirements, but I do have a problem when (the rules) affect a disproportionate number of black students.”

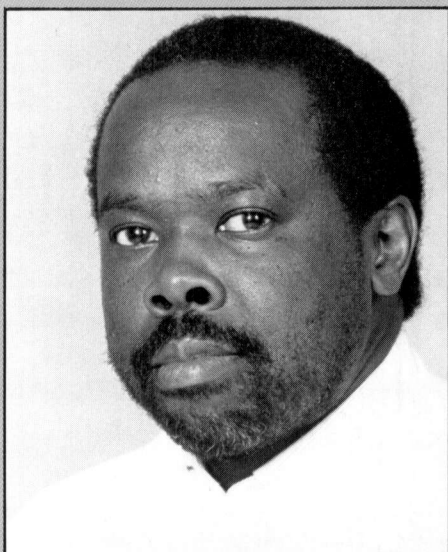
With last season behind them, the challenge for Clayton and his crew will be to continue their legacy into the next decade.

“We hope for an improvement over last year,” Clayton says. “Our younger players got much-needed playing time and experience, and we feel we have a pretty good base to build the program on for the future.”

If last year’s season is any indication of their dedication, the team is well on its way.

PERSONAL NOTE ON CLAYTON: Clayton is married to the former Barbara Calloway and has three daughters, Tiffani (8), Myah (3), and Micki (1). He also has a stepdaughter, Deneatra (16).

RATTLERETTE COACHING STAFF



RALPH COLEMAN ASSISTANT COACH

Coleman begins his 12th year as Mickey Clayton’s assistant with the Rattlerette basketball program. A Florida A&M graduate, Coleman played high school ball at Florida A&M University High School under FAMU Track and Field Coach Bobby Land. Coleman has served as assistant basketball coach at Walton High School in DeFuniak Springs. While Coleman’s responsibilities include across the board duties, his area of concentration is the guards.

RATTLERETTE SUPPORT STAFF



AKIMA ABRAKATA
Women's Athletic Trainer



CYNTHIA SMITH
Staff Assistant



CYNTHIA WILLIAMS
Team Academic Counselor

1989-90 TEAM MANAGERS

**Kim
McDowell**



**Kelly
Jefferson**

SERIES RECORDS AGAINST ALL OPPOSITION

All-Time Records

Alabama	0-1	Miami (Ohio)	0-1
Alabama State	9-8	Michigan	0-1
Alabama State (Ga.)	5-4	Minnesota	1-0
American (D.C.) U.	1-0	Mississippi State	1-0
Arkansas	1-0	Missouri	0-1
Bellarmine-Cookman	11-14	Montclair St. (N.J.)	0-1
Brinkley (Pa.)	1-0	Morris Brown (Ga.)	3-1
Central Florida	10-3	New Orleans (La.)	3-0
Clarke (Ga.)	2-0	North Dakota St.	0-1
Clark (Ga.)	3-0	North Carolina A&T	3-1
Dartmouth (N.H.)	1-0	Old Dominion (Va.)	0-1
Delaware	1-0	Paine (Ga.)	1-0
Delaware State	3-0	Pensacola JC	0-1
Dillard (La.)	1-1	Prairie View (Tex.)	3-1
Eastern Kentucky	1-0	Radford (Va.)	2-0
Eastern Washington	1-0	Rollins (Fla.)	2-0
Edward Waters (Fla.)	13-2	St. Leo (Fla.)	2-0
Fisk (Tenn.)	0-1	Savannah State (Ga.)	1-0
Flagler (Fla.)	5-4	Shorter (Ga.)	0-1
Florida	4-3	Southern-L.R. (La.)	0-2
Florida Atlantic	2-0	South Alabama	1-3
Florida International	3-3	South Carolina	0-1
Florida Memorial	1-0	South Carolina St.	9-9
Florida Southern	2-0	South Florida	0-1
Florida State	7-12	Southern Illinois	0-1
Ft. Valley St. (Ga.)	2-2	Stetson (Fla.)	17-4
Georgia	0-4	Talledega (Ala.)	4-2
Georgia Southern	8-9	Tampa (Fla.)	4-0
Georgia State	7-4	Tennessee-Chattanooga	0-1
Grambling (La.)	0-1	Tennessee State	3-4
Howard (D.C.)	3-0	Texas Southern	0-1
Hurlbert AFB	1-0	Texas Tech	0-1
Louisiana Tech	0-1	Troy State (Ala.)	1-1
Marshall (W. Va.)	1-0	Tuskegee (Ala.)	1-1
Maryland-E.S.	3-0	Vanderbilt (Tenn.)	0-1
Mercer (Ga.)	7-3	West Florida	2-0
Miami (Fla.)	7-5	Wisconsin-Green Bay	0-1
Michigan	0-1	Xavier of New Orleans	1-1

All-Time Records Against Conferences

Mid-Eastern Athletic	2-2
Southwestern Athletic	10-14
Southeastern	6-9
Big 10	1-1
Big 8	0-1
Missouri Valley	0-1
Mountain West	1-0
Navy League	1-0
CAC	2-0
NEW SOUTH	
Southland	0-1
South Belt	6-6
Southwest	7-12
Southwest Conference	0-1
Southern Intercollegiate	14-9
Southern	1-1
Old Valley	1-0
Mid-American	0-1



THE NEW SOUTH WOMEN'S CONFERENCE

Now a solid eight-team conference, the New South Women's Athletic Conference begins its fifth year of competition under the direction of third year commissioner Dr. Sherman Day.

The eight-team Division I women's conference includes Central Florida, Florida A&M, Georgia Southern, Georgia State, Mercer, Stetson, Florida International and Samford. The conference will once again offer championships in five sports: volleyball, cross country, basketball, tennis and fast-pitch softball.

In 1987, former Georgia State University athletic director Sherman Day was named league commissioner, succeeding Dr. G. Rankin Cooter in the post.

The sport of basketball has been the flagship sport for the league and FAMU has been on the cutting edge of the sport's development in the first three years of conference play.

FAMU and Georgia Southern had been the two dominant teams in hoops in the first three years of league play, with FAMU winning the regular season and tournament titles in the first season (1985-86), with Georgia Southern winning both regular season and tournament crowns in 1987 and 1988. Stetson ended their stranglehold on the basketball tournament by upsetting regular season champ Florida International in the finals this past March.

PAST CHAMPIONS

NSWC REGULAR SEASON

1989 - Fla. International
1988 - Georgia Southern
1987 - Georgia Southern
1986 - FLORIDA A&M

NSWC TOURNEY

1989 - Stetson (Fla.)
1988 - Georgia Southern
1987 - Georgia Southern
1986 - FLORIDA A&M

1988-89 STANDINGS

CONFERENCE

	W	L	Pct.	Home	Away	Streak
*Fla International	11	2	.846	6-0	5-2	L2
+ Stetson	10	5	.667	4-2	6-3	W5
Mercer	8	6	.571	5-1	3-5	L1
Georgia Southern	8	7	.533	4-2	4-5	L1
Florida A&M	5	8	.385	4-2	1-6	L5
Georgia State	4	9	.308	2-5	2-4	L1
Central Florida	2	11	.154	2-4	0-7	L2

OVERALL

	W	L	Pct.	Home	Away	Streak
*Fla International	20	7	.741	13-2	7-5	L1
+ Stetson	18	11	.621	11-4	7-7	W5
Mercer	13	15	.464	6-4	7-11	L1
Georgia Southern	18	12	.600	10-2	8-10	L1
Florida A&M	11	17	.393	9-4	2-13	L5
Georgia State	12	16	.429	6-7	6-9	L1
Central Florida	11	17	.393	11-7	0-10	L1
Non-Conference totals:	55	47	.539	39-14	16-33	

* Regular season conference champion
+ Tournament champion

ALL NSWC TEAM 1988-89

FIRST TEAM

Phyllette Blake, GSC*
Kerstin Skagius, MU
Shelia Reynolds, FIU
Michelle Michael, SU
Courtney Bullard, FIU
Fayette Robinson, UCF

SECOND TEAM

Angela Gresham, GSU
Sally Bunyard, SU
San Kegler, GSU
Donyale Ferguson, FAMU
Adrienne Jackson, FIU

HONORABLE MENTION (5)

Shelly Boston, FAMU

[*]-Player of the Year

RATTLERETTE OPPONENTS AT A GLANCE

AUGUSTA COLLEGE

Location	Augusta, GA
Enrollment	4,500
Colors	Blue, White
Nickname	Lady Jaguars
National Affiliation	NCAA Division One
Conference	Big South
Arena	Augusta Civic Center
President	Dr. Dick Wallace
Athletic Director	Clint Bryant
Athletic Dept. Phone	(404) 737-1626
Head Coach	Lowell Barnhart
Basketball Office Phone	(404) 737-1626
Sports Information Director	Alan Sharp
Office Phone	(404) 737-1626
Home Phone	(404) 733-7735

FLORIDA INTERNATIONAL UNIVERSITY

Location	Miami, FL
Enrollment	16,025
Colors	Blue, Gold
Nickname	Lady Golden Panthers
National Affiliation	NCAA Division One
Conference	New South Womens Athletic
Arena	FIU Sports Arena
President	Dr. Modesto Maidique
Athletic Director	Dr. Richard Young
Athletic Dept. Phone	(305) 554-2756
Head Coach	Cindy Russo
Basketball Office Phone	(305) 554-3160
Sports Information Director	Stu Davidson
Office Phone	(305) 554-2084
Home Phone	(305) 362-3568
Fax/Telecopier Number	(305) 554-2084

BETHUNE-COOKMAN COLLEGE

Location	Daytona Beach, FL
Enrollment	1,700
Colors	Maroon, Gold
Nickname	Lady Wildcats
National Affiliation	NCAA Division One
Conference	Mid-Eastern Athletic
Arena	Ocean Center
President	Dr. Oswald Bronson
Athletic Director	Dr. Lloyd Johnson
Athletic Dept. Phone	(904) 255-1401
Head Coach	Alvin Wyatt
Basketball Office Phone	(904) 255-1401
Sports Information Director	Johnny Randolph
Office Phone	(904) 255-1401
Home Phone	(904) 258-5567
Fax/Telecopier Number	(904) 255-1401 ext. 405

FLORIDA STATE UNIVERSITY

Location	Tallahassee, FL
Enrollment	25,000
Colors	Garnet, Gold
Nickname	Lady Seminoles
National Affiliation	NCAA Division One
Conference	Metro Athletic
Arena	Tully Gymnasium/Tallahassee/Leon Co. Civic Center
President	Dr. Bernard Sliger
Athletic Director	Robert Goin
Athletic Dept. Phone	(904) 644-1091
Head Coach	Marynell Meadors
Basketball Office Phone	(904) 644-1091
Sports Information Director	Wayne Hogan
Office Phone	(904) 644-1061
Home Phone	(904) 386-5359
Fax/Telecopier Number	(904) 644-3820

UNIVERSITY OF CENTRAL FLORIDA

Location	Orlando, FL
Enrollment	15,800
Colors	Black, Gold
Nickname	Lady Knights
National Affiliation	NCAA Division One
Conference	New South Womens Athletic
Arena	Central Florida Gymnasium
President	Dr. Steven Altman
Athletic Director	Gene McDowell
Athletic Dept. Phone	(407) 275-2342
Head Coach	Beverly Knight
Basketball Office Phone	(407) 275-2342
Sports Information Director	Bob Cefalo
Office Phone	(407) 275-2729
Home Phone	(407) 678-3356
Fax/Telecopier Number	(407) 281-5266

GEORGIA SOUTHERN COLLEGE

Location	Statesboro, GA
Enrollment	9,800
Colors	Blue, Gold, White
Nickname	Lady Eagles
National Affiliation	NCAA Division One
Conference	New South Womens Athletic
Arena	Hanner Fieldhouse
President	Dr. Nicholas Henry
Athletic Director	Dr. David Wagner
Athletic Dept. Phone	(912) 681-5239
Head Coach	Drema Greer
Basketball Office Phone	(912) 681-5327
Sports Information Director	Mark McClellan
Office Phone	(912) 681-5239
Home Phone	(912) 764-3829
Fax/Telecopier Number	(912) 681-0046

RATTLETTE OPPONENTS AT A GLANCE

SOUTH CAROLINA STATE COLLEGE

Location Orangeburg, SC
 Enrollment 4,000
 Colors Blue, Garnet
 Nickname Lady Bulldogs
 National Affiliation NCAA Division One
 Conference Mid-Eastern Athletic
 Arena SHM Memorial
 President Dr. Albert Smith
 Athletic Director Dr. Willis C. Ham
 Athletic Dept. Phone (803) 536-7243
 Head Coach Lyman Foster
 Basketball Office Phone (803) 536-8586
 Sports Information Director Bill Hamilton
 Office Phone (803) 536-7060
 Home Phone (803) 534-1814

UNIVERSITY OF SOUTH ALABAMA

Location Mobile, AL
 Enrollment 9,500
 Colors Red, White, Blue
 Nickname Lady Jaguars
 National Affiliation NCAA Division One
 Conference Sun Belt
 Arena Municipal Auditorium
 President Dr. Fred Whiddon
 Athletic Director Joe Gottfried
 Athletic Dept. Phone (205) 460-7121
 Head Coach Charlie Branum
 Basketball Office Phone (205) 460-7121
 Sports Information Director OPEN
 Office Phone (205) 460-7121
 Fax/Telecopier Number (205) 341-8222

UNIVERSITY OF MIAMI

Location Miami, FL
 Enrollment 13,000
 Colors Orange, Green
 Nickname Lady Hurricanes
 National Affiliation NCAA Division One
 Conference Independent
 Arena Miami Arena
 President Dr. Edward Foote III
 Athletic Director Sam Jankovich
 Athletic Dept. Phone (305) 284-3822
 Head Coach Ferne Labati
 Basketball Office Phone (305) 284-2680
 Sports Information Director Richard Dalrymple
 Office Phone (305) 284-3244
 Home Phone (305) 667-9645
 Fax/Telecopier Number (305) 284-2807

MORGAN STATE UNIVERSITY

Location Baltimore, MD
 Enrollment 4,700
 Colors Orange, Blue
 Nickname Lady Bears
 National Affiliation NCAA Division One
 Conference Mid-Eastern Athletic
 Arena Hill Fieldhouse
 President Dr. Earl Richardson
 Athletic Director Leonard C. Braxton
 Athletic Dept. Phone (301) 444-3050
 Head Coach Anderson Powell
 Basketball Office Phone (301) 444-3586
 Sports Information Director Theresa Coleman
 Office Phone (301) 444-3022/3050
 Home Phone (301) 488-3507

GEORGIA STATE UNIVERSITY

Location Atlanta, GA
 Enrollment 21,000
 Colors Royal Blue, Crimson
 Nickname Lady Crimson Panthers
 National Affiliation NCAA Division One
 Conference New South Womens Athletic
 Arena GSU Sports Arena
 President Dr. John M. Palms
 Athletic Director Dr. G. Rankin Cooter
 Athletic Dept. Phone (404) 651-2772
 Head Coach Brenda Paul
 Basketball Office Phone (404) 651-2772
 Sports Information Director Martin Harmon
 Office Phone (404) 651-2071
 Home Phone (404) 469-0849
 Fax/Telecopier Number (404) 651-3204

MERCER UNIVERSITY

Location Macon, GA
 Enrollment 3,000
 Colors Orange, Black
 Nickname Teddy Bears
 National Affiliation NCAA Division One
 Conference New South Womens Athletic
 Arena Macon Coliseum
 President Dr. R. Kirby Goodsey
 Athletic Director William Bibb
 Athletic Dept. Phone (912) 744-2994
 Head Coach Ed Nixon
 Basketball Office Phone (912) 744-2994
 Sports Information Director Bobby Page
 Office Phone (404) 451-0331

FLORIDA A&M UNIVERSITY



ALPHABETICAL ROSTER

41	BAKER, TARA	C	6-3	So.	Atlanta, GA (Forest Park HS)
31	BARNES, SHERRIE	F	5-10	Fr.	Atlanta, GA (Southside HS)
24	BASS, SHERRALL	C	6-1	Fr.	Las Vegas, NV (Eldorado HS)
32	BENTLEY, SONJA	F	6-1	Fr.	Titusville, FL (Astronaut HS)
15	BOSTON, SHELLY	G	5-7	So.	Seattle, WA (Garfield HS)
	COHEN, KAALI	G	5-7	Fr.	Burlington, NJ (Burlington HS)
33	COURSEAULT, TELANA	G	5-7	Fr.	Los Angeles, CA (Dorsey HS)
13	FERGUSON, DONYALE	G	5-8	Jr.	Miami, FL (Central HS)
34	HARMON, ANDREA	F	5-10	Fr.	Tampa, FL (Tampa Bay Tech)
40	INNERARITY, POLLY	C-F	6-2	So.	Hartford, CT (Prince Tech)
25	LOCKLEAR, SANDRA	F	5-9	Jr.	Merritt Island, FL (Merritt Island HS)
14	McMILLAN, DEMETRIA	G-F	5-8	Fr.	Marianna, FL (Marianna HS)
42	SMITH, CAMILLE	F	6-0	So.	Kent, OH (Roosevelt HS)

RATTLETTE ROSTER 1989-90



NUMERICAL ROSTER

	KAALI COHEN	G	5-7	Fr.	Burlington, NJ (Burlington HS)
13	DONYALE FERGUSON	G	5-8	Jr.	Miami, FL (Central HS)
14	DEMETRIA McMILLAN	G-F	5-8	Fr.	Marianna, FL (Marianna HS)
15	SHELLY BOSTON	G	5-7	So.	Seattle, WA (Garfield HS)
24	SHERRALL BASS	C	6-1	Fr.	Las Vegas, NV (Eldorado HS)
25	SANDRA LOCKLEAR	F	5-9	Jr.	Merritt Island, FL (Merritt Island HS)
31	SHERRIE BARNES	F	5-10	Fr.	Atlanta, GA (Southside HS)
32	SONJA BENTLEY	F	6-1	Fr.	Titusville, FL (Astronaut HS)
33	TELANA COURSEAUULT	G	5-7	Fr.	Los Angeles, CA (Dorsey HS)
34	ANDREA HARMON	F	5-10	Fr.	Tampa, FL (Tampa Bay Tech)
40	POLLY INNERARITY	C-F	6-2	So.	Hartford, CT (Prince Tech)
41	TARA BAKER	C	6-3	So.	Atlanta, GA (Forest Park HS)
42	CAMILLE SMITH	F	6-0	So.	Kent, OH (Roosevelt HS)



RATTLERETTE OPPONENTS AT A GLANCE

STETSON UNIVERSITY

Location	Deland, FL
Enrollment	2,200
Colors	Green, White
Nickname	Lady Hatters
National Affiliation	NCAA Division One
Conference	New South Womens Athletic
Arena	Edmunds Center
President	Dr. H. Douglas Lee
Athletic Director	Dr. Glenn Wilkes
Athletic Dept. Phone	(904) 734-4121
Head Coach	Nancy Nichols
Basketball Office Phone	(904) 734-4131
Sports Information Director	Ted Gumbart
Office Phone	(904) 734-4121 ext. 621
Home Phone	(904) 734-0937
Fax/Telecopier Number	(904) 736-7810



1988-89: A YEAR IN REVIEW

Just like the Dallas Cowboys, the Miami Dolphins, the Pittsburgh Steelers and the Boston Celtics, all good things, i.e. winning campaigns, must come to an end sometime and for Coach Mickey Clayton and his Rattlerettes, the down time came in 1988-89.

The loss of several key players and the resulting youthful inexperience resulted in a brew which didn't bode well for the Rattlerettes' hopes of extending their string of winning seasons to 11.

After racing off to a 5-1 start, the Rattlerettes seemed capable of beating the long odds against them. But four road games later, they limped back into Tallahassee 5-5 and the season began to take a more realistic tone.

FAMU lost a one-point game to S.C. State, 76-75, then was blasted by Miami (Fla.), 103-64 in Miami. The Rattlerettes then distinguished themselves in the Old Dominion Tournament, losing to the host school, 82-70, after leading through most of the first half and falling to Michigan, 87-74, after another gallant effort had them on top of the Big 10 entry early in the opening half.

To make a long story short, the Rattlerettes finished 11-17 overall and for the first time in the brief history of the New South Women's Conference, finished below .500 (5-7) and for the first time in league history, didn't make the tourney finals - a feat they's managed three years running, along with Georgia Southern.

Ironically, the two clubs met twice in the span of week at season's end, the second time in the opening round of the New South Tournament. FAMU bowed out 79-65, marking their first-ever first-round elimination in that meet.

Still in all, the season was one that even Coach Mickey Clayton found things he could be proud of. "I learned to appreciate the efforts that our young ladies gave and came to understand the limitations they were working under. That put the season in perspective."

Clayton, who is known for his recruiting wizardry, may have found the personnel a little lacking at times, since the three seniors on the club didn't provide the real standup leadership a youth-laden club like his needed.

In fact, the most outstanding displays of leadership and overall talent came from the underclassmen, especially a trio of first-year performers - Donyale Ferguson, Shelly Boston and Polly Innerarity.

Ferguson, a 5-8, guard-forward from Miami, led the club in scoring (13.7 points) and was a master at times of playing both the shooting and point guard spots. Against Florida Atlantic, she set a school record with 19 assists and set Rattlerette Tournament marks for assists in a single-game (19) and three-game tournament (39).

Ferguson earned second-team All-NSWC honors and made the 1989-90 preseason New South all-star team. She led the club in scoring in 11 games and four times led the team in rebounds.

Boston, an almost "dainty" young lady from the West Coast (Seattle), played with a fire and grit which wasn't immediately evident by looking at her seemingly frail frame.

The 5-8 guard was third team Black College All-America and was honorable mention All-NSCW. She averaged 10.5 points per game, while averaging 4.4 rebounds, leading the club in steals (104), assists (121), minutes played (802), as well as setting single-game (6) and single-season marks (26) for three-point goals.

Innerarity, the "big girl" in this sterling triumvirate, led the club in rebounding (6.0) and averaged 9.6 points per game. Her aggressive, physical style of play helped her early in the season, when she scored 41 points and pulled down 23 rebounds in games against Radford (Va.) University and American (D.C.) University.

Chiquita Miller, a 6-0 forward, who left the club at midyear, took excellent foul shooting, rebounding and scoring skills away at a crucial time. She averaged 12.4 points, 5.6 rebounds and shot .789 percent from the charity stripe.

Meanwhile, seniors Shelley Hart and Latrice Shotwell, had up-and-down final campaigns, as did center Darmecia McKay. Hart averaged 12.4 points per game and a second-leading 5.6 rebounds per game; Shotwell, averaged 6.2 points and nearly a pair of boards each game, while McKay averaged nearly four rebounds and as many points per game.

Junior Lisa Johnson, not much for scoring, did dish out over 100 assists (104) and came up with 61 steals; sophomore Sandra Locklear, displayed some on-floor leadership as well as clutch play, as she averaged 7.4 points and 4.2 rebounds per game.

Another pair of newcomers added some occasional punch and showed flashes of potential. Forward Camille Smith (5.0 points, 3.1 rebounds) and center Tara "Tree" Baker, who at 6-3, averaged 4.5 points and 3.0 rebounds, to go along with 31 blocked shots, could be two players who could help Coach Clayton's bid for a winning campaign in 1989-90.

FINAL FLORIDA A&M RATTLETTERETTE BASKETBALL STATISTICS 1988-89

FINAL RECORD: 11-17

PLAYER	GP	FGM-FGA	PCT.	3-Point Goals		FTM-FTA	PCT.	REBS-AVG.	PF-DQ	PTS-AVG.	AST	TOV	BS	STL	MINS	Highs	
				FGM-FGA	PCT.											PTS	RBS
FERGUSON	28	140-346	.404	1-9	.111	108-138	.782	111-3.9	74-2	384-13.7	90	69	2	75	620	28	9
MILLER	8	42-93	.452	0-1	.000	15-19	.789	45-5.6	11-0	99-12.4	8	13	4	12	149	23	10
HART	26	128-289	.443	0-2	.000	57-87	.665	134-5.1	79-2	309-11.8	25	58	6	54	597	24	12
BOSTON	28	105-301	.348	26-68	.382	61-90	.677	123-4.4	87-5	296-10.5	121	107	1	104	802	33	11
INNERARITY	28	111-259	.428	0-0	.000	49-96	.510	169-6.0	106-9	271- 9.6	6	38	29	30	570	21	16
LOCKLEAR	28	91-185	.492	0-0	.000	37-60	.616	118-4.2	74-5	207- 7.4	59	57	3	43	543	22	9
SHOTWELL	26	67-172	.389	13-40	.325	16-32	.500	42-1.6	59-1	163- 6.2	28	43	1	21	414	20	4
SMITH	28	62-159	.389	0-0	.000	18-32	.562	89-3.1	56-2	140- 5.0	25	35	4	12	391	18	11
BAKER	28	50-119	.420	0-0	.000	26-44	.590	84-3.0	67-5	127- 4.5	11	30	31	14	434	14	10
McKAY	28	37-115	.321	0-0	.000	22-42	.523	98-3.5	88-10	95- 3.4	9	58	10	30	444	10	7
JOHNSON	28	32-95	.336	0-3	.000	19-39	.487	55-1.9	54-1	81- 2.9	104	101	1	61	608	10	6
FAMU TTLS	28	827-2142	.386	41-123	.333	428-679	.630	1208-43.1	757-41	2194-78.3	473	623	88	450	5625	133	72
OPPS TTLS	28	710-1583	.448	29-102	.284	593-915	.648	1244-44.4	579-20	1980-70.7	362	830	78	265	5625	103	79

NSWAC REBS B'DWN

Off	Def	TTL
673	535	1208

1988-89 FLORIDA A&M WOMEN'S SCOREBOARD

Date	Opponent	Score	W/L	Streak	Attendance	Top Scorer/Top Rebounder
Nov. 25	*Radford University (Va.)	64-92	L	L1	425	Polly Innerarity 21pts/Innerarity 14rbs
Nov. 26	*American University (D.C.)	91-75	W	W1	350	Polly Innerarity 20pts/Innerarity 9rbs
Dec. 1	*CLARK COLLEGE (Ga.)	113-47	W	W2	513	Donyale Ferguson 23pts/Hart 12rbs
Dec. 2	*ALBANY STATE COLLEGE (Ga.)	57-48	W	W3	737	Shelley Hart 22pts/Hart-Innerarity 9rbs
Dec. 3	*FLORIDA ATLANTIC UNIV	114-89	W	W4	1,012	Latrice Shotwell 20pts/Ferguson 9rbs
Dec. 8	EDWARD WATERS COLLEGE (Fla.)	133-42	W	W5	610	Shelley Hart 24pts/Chiquita Miller 9rbs
Dec. 12	at S.C. State College	75-76	L	L1	378	Chiquita Miller 17pts/Miller 10rbs
Dec. 19	at U. of Miami (Fla.)	64-103	L	L2	306	Ferguson-Miller 16pts/Shelley Hart 7rbs
Dec. 29	@Old Dominion (Va.)	70-82	L	L3	1,191	Shelley Hart 16pts/Boston-Hart 8rbs
Dec. 30	@University of Michigan	74-87	L	L4	379	Donyale Ferguson 15pts/Innerarity 9rbs
JAN. 7	+GEORGIA SOUTHERN COLLEGE	83-79	W	W1	677	Donyale Ferguson 28pts/Tara Baker 7rbs
JAN. 11	SOUTH CAROLINA STATE	81-67	W	W2	1,307	Polly Innerarity 16pts/Tara Baker 10rbs
Jan. 14	+at Mercer University (Ga.)	92-93/ot	L	L1	275	Shelley Hart 16pts/Shelley Hart 9rbs
Jan. 16	+at Georgia St. University	84-72	W	W1	100	Donyale Ferguson 22pts/Three with 6rbs
JAN. 21	UNIVERSITY OF MIAMI (Fla.)	66-73	L	L1	2,579	Sandra Locklear 22pts/Locklear 9rbs
JAN. 23	+FLORIDA INTERNATIONAL	71-77	L	L2	387	Donyale Ferguson 23pts/Shelley Hart 6rbs
JAN. 25	BETHUNE-COOKMAN COLLEGE	61-62	L	L3	494	Donayle Ferguson 18pts/Tara Baker 7rbs
JAN. 28	+U. OF CENTRAL FLORIDA	82-61	W	W1	1,317	Camille Smith 18pts/Shelley Hart 8rbs
JAN. 30	+STETSON UNIVERSITY (Fla.)	83-73	W	W2	487	Shelley Hart 23pts/Shelly Boston 6rbs
Feb. 4	at Bethune-Cookman (Fla.)	58-61	L	L1	6,100	Latrice Shotwell 19pts/Innerarity 9rbs
Feb. 6	+at Florida International	69-76	L	L2	101	Boston-Hart 12pts/Donyale Ferguson 7rbs
Feb. 9	at Florida St. University	68-75	L	L3	1,286	Donyale Ferguson 19pts/Boston 11rbs
FEB. 11	+MERCER UNIVERSITY (Ga.)	83-60	W	W1	683	Donyale Ferguson 17pts/Three with 7bs
FEB. 13	+GEORGIA STATE UNIVERSITY	66-67	L	L1	196	Shelley Hart 19pts/Polly Innerarity 8rbs
Feb. 18	+at U. of Central Florida	79-86	L	L2	125	Shelly Boston 24pts/Polly Innerarity 9rbs
Feb. 20	+at Stetson University	75-80	L	L3	379	Shelly Boston 33pts/Sandra Locklear 7rbs
Feb. 25	+at Georgia Southern	63-69	L	L4	567	Donyale Ferguson 22pts/Innerarity 16rbs
Mar. 2	##Georgia Southern	65-79	L	L5	100	Ferguson 14pts/Camille Smith 11rbs
Mar. 3	NSWAC Tournament (Atlanta)					
Mar. 4	NSWAC Tournament (Atlanta)					

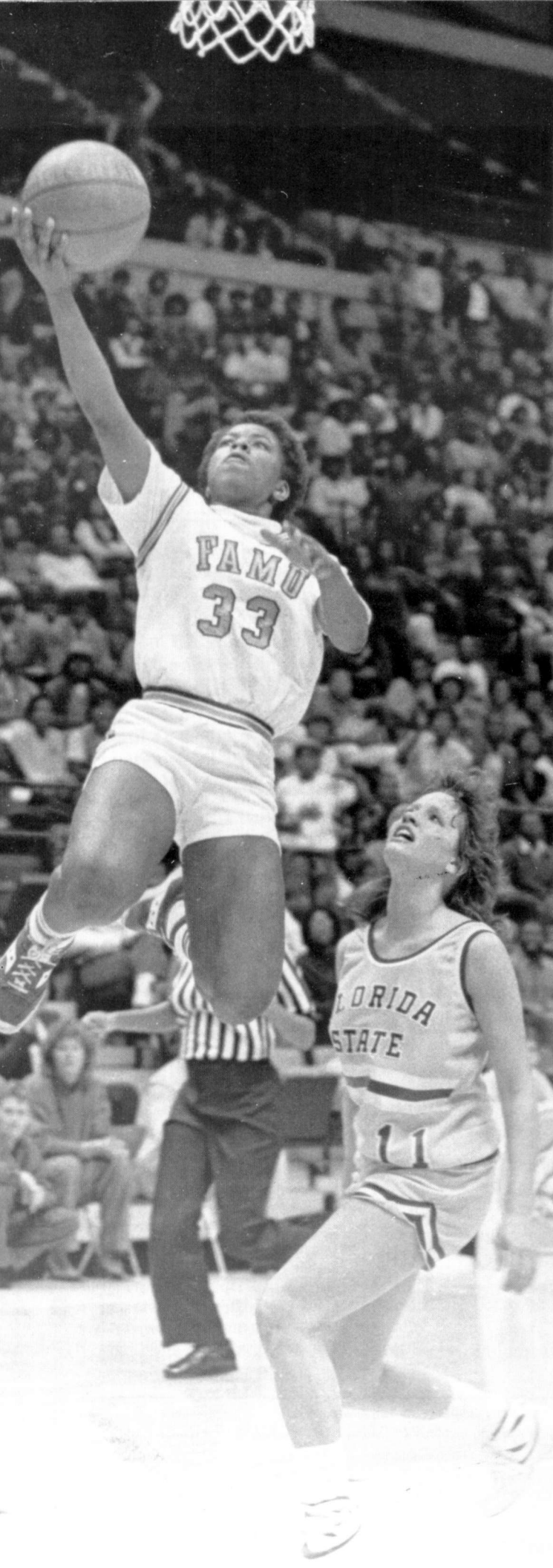
[*]-Lady Kat Invitational, University of Kentucky, Lexington, Ky.

[°]-Rattletterette Invitational, Tallahassee, Fla.

[@]-Old Dominion Tournament, Old Dominion University, Roanoke, Va.

[+]-New South Conference Game; HOME GAMES in ALL CAPS

[##]-New South Conference Tournament, Atlanta, Ga., Georgia State University (host)



RATTLERETTE BASKETBALL HISTORY

Although Rattlerette basketball had its beginnings in the 1940s and 1950s under the late Dr. Lua S. Bartley, considered by many to be the "Mother" of Women's Athletics at FAMU, the "modern" era began under Coach Mickey Clayton in 1977-78.

With little time to prepare and no time to recruit, the former Rattler basketball player scored the FAMU campus finding 10 coeds who suited up for the first season, a year which was to end 4-15. FAMU's game was a 51-point loss to crosstown Florida State, a school which would figure prominently in the rise of Rattlerette basketball.

From those humble beginnings, Clayton built a program which would go on to win 194 of 328 games over 12 years. Blending a first recruiting class with holdovers from the original 10, FAMU posted a 14-11 mark in 1978-79, finishing second in the state in the small college division of the Association of Intercollegiate Athletics for Women (AIAW). That recruiting class turned out to be, in Clayton's opinion, one of the top "two or three recruiting classes," at FAMU.

Those newcomers eventually led FAMU into AIAW regional play and on to the highest rung of the collegiate ladder — Division One. FAMU had in three years improved to the point that they'd beaten crosstown Florida State three times in four tries and in order to keep the series alive, they moved up to Division One, since FSU threatened to play only Division One schools.

In recent years with the NCAA's startup of women's athletic championships and rankings, etc, FAMU has kept up with the times, being willing to take on the best Division One had to offer and not only be competitive, but win as well.

During the last five or six seasons, Top 20 teams like Georgia, Louisiana Tech, Auburn, Minnesota, Mississippi State and Alabama have appeared on the FAMU schedule, either head-to-head scheduling or in tournaments.

The Rattlerettes nearly handed Louisiana Tech an early season loss, falling to the Lady Techsters, 61-56 (1985-86); have beaten Auburn (63-62) in 1983-84 and also have wins over Big Minnesota and Southeastern Conference member Mississippi State.

In 1987-88, the Rattlerettes finished 21-8, their second 20-win season in three years and their fourth season with 19 or more wins in the last five years.

Three years ago, the Rattlerettes were charter members of the New South Women's Athletic Conference (NSWAC), which held its first league tournament at Gaither Gym, which FAMU won over Georgia Southern 68-54. It would mark the first of three straight finals appearances by FAMU and Georgia Southern, although the Lady Eagles of GSC have come out on top the last two times.

Still, FAMU has had some great seasons, great players and great games. No one will forget FAMU's rally from 20 points down to nip Florida State in 1981-82, 87-86, before a packed house at Gaither Gymnasium. In fact, that was the last year of the two-game-a-year series, as the teams began playing their annual battle in the Tallahassee-Leon County Civic Center.

From Linda Thomas to April Manning; from Sandra Carter to Sharon Cliett; from Cynthia Lee to Cynthia Williams; from Sybil Rivers to Valerie Seay, Rattlerette Basketball has been a winner.

ALL-TIME RECORDS/INDIVIDUAL AND TEAM

INDIVIDUAL GAME

Field Goals Attempted — 28, Sandra Carter (Florida) 12/20/80
 Field Goals Scored — 17, Martha Howard (Talladega) 1979
 Free Throws Attempted — 22, Sandra Carter (Albany St.) 1/8/80
 Free Throws Scored — 14, Sandra Carter (Albany State) 1/8/80
 Points Scored — 44, Martha Howard (Talladega) 1979
 Rebounds — 24, Sandra Carter (Stetson) 12/3/79
 Assists — 19, Donyale Ferguson (Fla. Atlantic) 12/3/88

TEAM SINGLE GAME

Points Scored — 133 (Edward Waters) 12/8/88
 Points Scored by Opponent — 123 (Albany State) 1979
 Fewest Points Scored — 33 (Florida State) 1977
 Fewest Points Scored by Opponent — 32 (Flagler) 2/16/82
 Field Goals Attempted — 105 (Maryland Eastern-Shore) 1/7/87
 Field Goals Scored — 55 (Edward Waters) 11/18/81
 Free Throws Attempted — 67 (Albany State) 1/8/80
 Free Throws Scored — 36 (Albany State) 1/8/80
 Assists — 38 (Morris Brown) 12/7/84
 Turnovers — 51 (Edward Waters) 11/15/83

INDIVIDUAL SEASON

Field Goals Attempted — 422, Rosa Hudgins (1984-85)
 Field Goals Scored — 198, Sybil Rivers (1981-82)
 Field Throws Attempted — 179, Sybil Rivers (1981-82)
 Free Throws Scored — 118, Linda Thomas (1979-80)
 Points Scored — 513, Sybil Rivers (1981-82)
 Scoring Average — 17.7, Sybil Rivers (1981-82)
 Rebounds — 275, Sandra Carter (1980-81)
 Rebound Average — 10.2, Sandra Carter (1980-81)
 Assists — 192, Valerie Seay (1985-86)
 Steals — 132, April Manning (1987-88)
 Field Goals Percentage — .790, Linda Thomas (1979-80)
 Blocked Shots — 84, Pam Johnson (1980-81)

INDIVIDUAL CAREER

Field Goals Attempted — 1,503, Rosa Hudgins (1981-84)
 Field Goals Scored — 633, Rosa Hudgins (1981-84)
 Scoring Average — 15.6, Sybil Rivers (1981-82)
 Rebound Average — 10.0, Sandra Carter (1979-80)

RATTLERETTE CAREER LEADERS

Scoring/Top Ten Scorers

Rosa Hudgins	1,459
Cynthia Lee	1,317
April Manning	1,261
Esther Myrick	1,232
Linda Thomas	1,037
Gail Myrick	962
Brenda Fogle	805
Sybil Rivers	787
Sandra Carter	790
Valerie Seay	696

Assists/Top Five

April Manning	521
Valerie Seay	463
Brenda Fogle	359
Valerie Robinson	339
Evonnie Williams	300

Steals/Top Five

April Manning	351
Valerie Robinson	193
Valerie Seay	179
Cynthia Lee	172
Rosa Hudgins	168

Rebounding/Top Six

Esther Myrick	832
Gail Myrick	745
Rosa Hudgins	713
Cynthia Lee	649
Sandra Carter	519
Cynthia Williams	511
Mania Mack	499

Games Played/Top Ten

Gail Myrick	113
Esther Myrick	111
Cynthia Lee	110
April Manning	109
Evonnie Williams	107
Mania Mack	105
Cynthia Williams	105
Rosa Hudgins	103
Valerie Robinson	100
Sofia Hayward	99

INDIVIDUAL AND TEAM / ALL-TIME RECORDS

RATTLERETTE ALL-AMERICANS

1982 — Sybil Rivers (NAWS)
 1983 — Cynthia Lee (NAWS)
 1984 — Rosa Hudgins (NAWS)
 Valerie Seay (NAWS, 3rd team)
 1986 — Cynthia Lee (NAWS, 2nd team)
 1989 — Shelly Boston (NAWS, 3rd team)

RATTLERETTE FRESHMAN ALL-AMERICANS

1983 — Esther Myrick (NAWS)
 1984 — April Manning (NAWS)

RATTLERETTE POST-SEASON PLAY

1978-79 AIAW Region III Division II Tournament
 Shorter 70 FAMU 40
 1980-81 AIAW Region III Division I Tournament
 Georgia Southern 81 FAMU 68
 1985-86 New South Conference Tournament
 FAMU 89 Central Florida 87
 FAMU 68 Georgia Southern 54
 1986-87 New South Conference Tournament
 FAMU 78 Stetson 74
 Georgia Southern 74 FAMU 69
 1987-88 NSWAC Tournament
 FAMU 98 Mercer 76
 FAMU 65 FIU 63
 Georgia Southern 73 FAMU 66
 1988-89 NSWC Tournament
 Georgia Southern 79 FAMU 65

TEAM SEASON

Scoring Average — 77.0 (1987-88)
 Lowest Opponent Scoring Average — 65.7 (1978-79)
 Field Goals Attempted — 2,215 (1979-80)
 Field Goals Made — 928 (1987-88)
 Field Goals Percentage — .443 (1984-84)
 Free Throws Attempted — 834 (1979-80)
 Free Throws Percentage — .604 (1981-82)
 Rebounds — 1,460 (1980-81)
 Rebound Average — 50.3 (1980-81)

RATTLERETTE CENTURY MARKS

FAMU	111	Talladega	65	1978-79
FAMU	101	Edward Waters	47	12/13/79
FAMU	111	West Florida	52	12/5/80
FAMU	123	Edward Waters	53	11/18/81
FAMU	102	Edward Waters	80	11/25/81
FAMU	100	Delaware State	78	2/3/84
FAMU	106	Edward Waters	72	12/7/87
FAMU	100	Maryland-Eastern Shore	83	1/7/88
FAMU	113	Clark (Ga.)	47	12/1/88
FAMU	114	Florida Atlantic	89	12/3/88
FAMU	133	Edward Waters	42	12/8/88

ATTENDANCE RECORDS

3,112	vs.	South Carolina State	1/30/85
3,109	vs.	Georgia State	2/27/88
3,017	vs.	Florida State	1/19/83
2,973	vs.	Bethune-Cookman	2/26/85
2,653	vs.	Florida State	2/18/80
2,652	vs.	Georgia Southern	3/8/86*
2,579	vs.	Miami (Fla.)	1/21/89
2,543	vs.	Central Florida	3/7/86*
2,500	vs.	South Alabama	2/17/81
2,378	vs.	Stetson	1/27/81
2,304	vs.	Stetson	1/25/88
2,301	vs.	Florida State	2/13/86
2,228	vs.	Bethune-Cookman	2/25/84

*New South Conference Tournament

Assists — 560 (1987-88)
 Blocked Shots — 151 (1980-81)
 Steals — 468 (1980-81)
 Wins — 21 (1985-86, 87-88)
 Least Wins — 4 (1977-78)
 Most Losses — 17 (1988-89)
 Least Losses — 8 (1983-84, 85-86)
 Most Wins in a Row — 13 (1984-86)

ALL-TIME RECORDS/INDIVIDUAL AND TEAM

ALL-TIME SCORES/SINCE 1978-79

1978-79 (14-11)

Morris Brown 71, FAMU 50
FAMU 92, Talladega 49
FAMU 70, Stetson 56
Central Florida 65, FAMU 62
FAMU 71, Edward Waters 55
Alabama State 74, FAMU 54
Alabama State 74, FAMU 61
Bethune-Cookman, OT80, FAMU 76
FAMU 78, New Orleans 62
FAMU 67, Miami 36
FAMU OT84, Florida State 79
Albany State 75, FAMU 53
FAMU 90, Miami 58
FAMU 94, Florida International 46
FAMU 111, Talladega 65
FAMU 77, Morris Brown 50
FAMU 77, Florida State 61
FAMU 71, Stetson 59
Bethune-Cookman 68, FAMU 65
FAMU 96, State Leo 59
FAMU 72, Central Florida 67
Flagler 76, FAMU 69
Shorter 70, FAMU 40

1979-80 (18-11)

FAMU 90, Alabama State 86
Southern 106, FAMU 88
Xavier-NO 73, FAMU 65
Dillard 84, FAMU 80
FAMU 69, Flagler 65
FAMU 84, Talladega 66
FAMU 64, Stetson 50
Florida State 74, FAMU 61
FAMU 78, Bethune-Cookman 66
FAMU 76, Troy State 73
FAMU 101, Edward Waters 47
FAMU 93, Alabama State 80
Albany State 84, FAMU 78
Troy State 109, FAMU 55
FAMU 85, Talladega 73
FAMU 58, Edward Waters 40
FAMU 78, Stetson 72
FAMU 86, Tennessee State 82
FAMU 90, Central Florida 71
FAMU 81, Florida Southern 71
Bethune-Cookman 72, FAMU 70
Vanderbilt 80, FAMU 68
Tennessee State 85, FAMU 79
Fisk 80, FAMU 79
FAMU 72, Florida Southern 55
FAMU OT84, Albany State 83
FAMU 67, Florida State 60
FAMU 80, Rollins 40
Central Florida 78, FAMU 68

1980-81 (18-11)

FAMU 88, Edward Waters 66
FAMU 77, Flagler 63
Southern 82, FAMU 68
Texas Southern 89, FAMU 76
FAMU 55, Central Florida 41
FAMU 63, Bethune-Cookman 58
FAMU 111, West Florida 52
FAMU 84, South Carolina State 75
FAMU 72, Miami 50
South Alabama 69, FAMU 52
Alabama State 76, FAMU 73
FAMU 85, Edward Waters 74
FAMU OT79, Tennessee State 66
Florida State 76, FAMU 64
FAMU 82, South Florida 65
FAMU 90, Stetson 62
FAMU 97, Tennessee State 66
FAMU 90, Flagler 56
Bethune-Cookman 63, FAMU 50
FAMU 69, Florida 68
South Carolina 100, FAMU 51
FAMU 90, Tampa 69
FAMU 68, Bethune-Cookman 62

Florida State 76, FAMU 47
FAMU 62, South Alabama 58
Miami 79, FAMU 47
Florida 68, FAMU 55

1981-82 (18-11)

FAMU 123, Edward Waters 53
FAMU 72, Stetson 52
FAMU 102, Edward Waters 80
Florida 80, FAMU 68
FAMU 84, Alabama State 74
FAMU 66, Xavier-NO 58
FAMU 64, West Florida 50
FAMU 98, Flagler 42
FAMU 80, Eastern Kentucky 78
FAMU 75, Bethune-Cookman 71
South Carolina State 89, FAMU 70
FAMU 87, Florida State 86
FAMU 72, South Florida 63
Tennessee State 82, FAMU 75
South Florida OT68, FAMU 63
FAMU 80, Stetson 68
Miami 66, FAMU 62
Florida 88, FAMU 63
FAMU 60, Flagler 32
Florida State 59, FAMU 58
South Carolina State 63, FAMU 59
FAMU 69, Miami 64
FAMU 79, North Carolina State 69
Tennessee State 97, FAMU 87

1982-83 (15-11)

Tuskegee 93, FAMU 81
FAMU 88, Edward Waters 75
Mercer 93, FAMU 53
FAMU 74, Tampa 53
FAMU 87, Edward Waters 55
FAMU 85, Stetson 69
Bethune-Cookman 66, FAMU OT64
Southern Illinois 80, FAMU 56
Georgia Southern 70, FAMU 67
Montclair State 62, FAMU 50
FAMU 66, South Carolina State 60
FAMU 60, Florida State 60
FAMU 65, Miami 58
FAMU 92, Tampa 79
FAMU 82, South Florida 72
FAMU 66, South Florida 59
FAMU 68, Bethune-Cookman 67
Florida State 82, FAMU 65
North Carolina State 78, FAMU 65
FAMU 65, South Carolina State 63
FAMU OT80, Miami 78
Bethune-Cookman 71, FAMU 55
FAMU 63, Stetson 54
FAMU 69, Howard 67
South Carolina State 63, FAMU 61

1983-84 (19-8)

FAMU 66, Edward Waters 55
FAMU 84, Tuskegee 77
FAMU 77, Morris Brown 57
FAMU 74, Claflin 67
FAMU 70, Dillard 67
FAMU 83, Florida Memorial 60
FAMU 63, Auburn 62
Missouri 92, FAMU 67
Tenn.-Chattanooga 81, FAMU 61
South Florida OT66, FAMU 64
FAMU 93, Georgia State 57
FAMU 88, Stetson 67
Bethune-Cookman 69, FAMU 63
South Alabama 65, FAMU 63
South Carolina State OT69, FAMU 61
FAMU 81, North Carolina A&T 65
FAMU 89, Delaware State 80
FAMU 64, Howard 53
FAMU 100, Delaware State 78
FAMU 84, Maryland-ES 61
FAMU 76, Howard 69

FAMU 94, Maryland-ES 61
Florida State 80, FAMU 64
FAMU 63, Stetson 55
FAMU 97, North Carolina A&T 74
South Carolina State 72, FAMU 67
FAMU 73, Bethune-Cookman 63

1984-85 (19-9)

FAMU 68, Edward Waters 60
FAMU 88, Albany State 68
Texas Tech 91, FAMU 69
FAMU 78, Mississippi State 62
FAMU 66, Minnesota 57
Albany State 54, FAMU 46
FAMU 89, Prairie View 62
FAMU 89, Morris Brown 63
FAMU 74, Claflin 64
FAMU 84, Alabama State 65
FAMU 75, Marshall 71
FAMU 78, Eastern Wash. 74
FAMU 86, Central Florida 73
South Carolina State 93, FAMU OT83
Georgia 85, FAMU 53
FAMU 80, Georgia Southern 72
FAMU 80, South Carolina State 74
Tennessee State 70, FAMU 53
Alabama State 80, FAMU 74
South Alabama 70, FAMU 52
FAMU 61, Florida State 57
FAMU 76, Ft. Valley State 67
FAMU 67, Georgia Southern 63
Bethune-Cookman 57, FAMU 55
FAMU 73, Bethune-Cookman 64
FAMU 63, Georgia Southern 58
FAMU 69, New Orleans 68
Georgia State 83, FAMU 81

1985-86 (21-8)

Louisiana Tech 61, FAMU 56
North Dakota State 60, FAMU 59
FAMU 74, Alabama State 68
FAMU 78, Albany State 53
FAMU 91, Prairie View 83
FAMU 61, Mississippi Valley 58
Mercer 75, FAMU 71
Georgia 90, FAMU 62
Alabama State 63, FAMU 59
FAMU 72, Stetson 66
FAMU 64, Paine 57
South Carolina State 61, FAMU 56
FAMU 77, Georgia Southern 76
FAMU 73, Ft. Valley State 71
Bethune-Cookman 68, FAMU 68
Georgia State 64, FAMU 61
FAMU 79, Mercer 64
FAMU 74, Albany State 49
FAMU 85, Central Florida 74
FAMU 81, Stetson 67
FAMU 76, Florida 57
FAMU 83, Florida State 65
FAMU 94, Georgia State 69
FAMU 65, South Carolina State 62
FAMU 95, Central Florida 74
FAMU 86, Georgia Southern 77
FAMU 94, Bethune-Cookman 73
FAMU 89, Central Florida 87
FAMU 68, Georgia Southern 54

1986-87 (16-13)

Alabama 81, FAMU 60
FAMU 93, Georgia State 70
Grambling State 65, FAMU 61
FAMU 91, Edward Waters 53
Miami (Ohio) 68, FAMU 57
FAMU 63, Delaware 57
Alabama State 73, FAMU 67
Prairie View 66, FAMU 57
FAMU 83, Delaware State 67
FAMU 62, Dartmouth 49
FAMU 69, Buckness 62

FAMU 81, Mercer 76
FAMU 74, Buckness 62
FAMU 73, Stetson 70
FAMU 68, South Carolina State 63
FAMU 94, Mercer 89
FAMU 86, Central Florida 73
Georgia Southern 83, FAMU 50
Georgia State 83, FAMU 82
FAMU 76, Stetson 73
Florida State 79, FAMU 72
Georgia Southern 79, FAMU 56
FAMU 92, Central Florida 83
South Carolina State 47, FAMU 43
Georgia 89, FAMU 51
Bethune-Cookman 55, FAMU 49
FAMU 78, Stetson 74
Georgia Southern 74, FAMU 69

1987-88 (21-8)

FAMU 75, Bethune-Cookman 62
FAMU 91, Florida Atlantic 47
FAMU 80, Prairie View 68
FAMU 106, Edward Waters 72
Alabama State 86, FAMU 77
FAMU 76, Bethune-Cookman 70
Wisconsin-Green Bay 77, FAMU 52
FAMU 100, Maryland-ES 83
Florida International 74, FAMU 61
Miami (Fla.) 104, FAMU 86
FAMU 72, South Carolina State 71
FAMU 93, Mercer 51
FAMU 81, Georgia State 80
FAMU 73, Florida State 68
FAMU 71, Central Florida 60
Stetson 67, FAMU 64
FAMU 81, Alabama State 68
FAMU 77, Georgia Southern 76
FAMU 89, Miami (Fla.) 88
FAMU 58, Florida International 51
Georgia Southern 75, FAMU 62
FAMU 89, South Carolina State 51
Georgia 86, FAMU 55
Stetson 89, FAMU 69
FAMU 73, Central Florida 55
FAMU 97, Georgia State 80
FAMU Over Mercer by Forfeit
FAMU 98, Mercer 76
FAMU 65, Florida International 63
Georgia Southern 73, FAMU 66

1988-89 (11-17)

Radford 92, FAMU 64
FAMU 91, American University 75
FAMU 113, Clark (Ga.) 47
FAMU 57, Albany State (Ga.) 49
FAMU 114, Florida Atlantic 89
FAMU 133, Edward Waters 42
South Carolina State 76, FAMU 75
Miami (Fla.) 103, FAMU 64
Old Dominion 82, FAMU 70
Michigan 87, FAMU 74
FAMU 83, Georgia Southern 79
FAMU 81, South Carolina State 67
Mercer 93, FAMU 92, 2 OT
FAMU 84, Georgia State 72
Miami (Fla.) 73, FAMU 66
Florida International 77, FAMU 71
Bethune-Cookman 62, FAMU 61
FAMU 82, Central Florida 61
FAMU 83, Stetson 73
Bethune-Cookman 61, FAMU 58
Florida International 76, FAMU 69
Florida State 75, FAMU 68
FAMU 83, Mercer 60
Georgia State 67, FAMU 66
Central Florida 86, FAMU 79
Stetson 80, FAMU 75
Georgia Southern 69, FAMU 63
Georgia Southern 79, FAMU 65

RATTLETTE INVITATIONAL

CORNING RATTLETTE INVITATIONAL PARTICIPANTS

Alabama State — 1979, 81, 86, 87, 89
Albany State — 1985, 86, 88, 89
Bethune-Cookman — 1982, 83, 88
Claflin — 1983, 84
Clark — 1988
Dillard — 1983
Edward Waters — 1980, 83, 84
Florida Atlantic — 1987, 88
Ft. Valley State — 1984
Grambling — 1979
Jackson State — 1983

Lincoln Memorial — 1988
Mississippi Valley — 1985
Morris Brown — 1983, 84
North Carolina A&T — 1984
Prairie View — 1984, 85, 86, 87, 89
Savannah State — 1982, 88
South Carolina State — 1980, 88
Tennessee State — 1983, 84
West Florida — 1980
Xavier (NO) — 1981
FLORIDA A&M — HOST

CHAMPIONS

1988 — FLORIDA A&M
1987 — FLORIDA A&M
1986 — Albany State
1985 — FLORIDA A&M
1984 — FLORIDA A&M
1983 — FLORIDA A&M
1982 — Bethune-Cookman
1981 — FLORIDA A&M
1980 — FLORIDA A&M
1979 — Southern

MOST VALUABLE PLAYERS

1988 — Donyale Ferguson, FAMU
1987 — Cynthia Williams, FAMU
1986 — Lois Hartrey, Albany State
1985 — Valerie Seay, FAMU
1984 — Mary Jo Lowder, Claflin
1983 — Laura Johnson, FAMU
1982 — Brenda Brown, Bethune-Cookman
1981 — Rosa Hudgins, FAMU
1980 — Brenda Fogle, FAMU
1979 — Jackie Jackson, Southern

GAME HIGHS (TEAM)

Most Points: 114 by FAMU vs. Florida Atlantic (1988)
Most Shots: 106 by FAMU vs. Clark (1988)
Most Assists: 38 by FAMU vs. Florida Atlantic (1988)
Most Rebounds: 72 by FAMU vs. Clark (1988)

GAME HIGHS (INDIVIDUAL)

Most Points: 37, Mary Jo Lowder (Claflin) vs. Southern (1984)
Most Rebounds: 21, Sharon Miller (West Florida) vs. Edward Waters (1980)
Most Assists: 19, Donyale Ferguson (FAMU) vs. Florida Atlantic (1988)
Most Steals: 10, Vanessa Haynes (Edward Waters) vs. West Florida (1980)
Most Blocks: 5, Tara Baker (FAMU) vs. Clark (1988)

INDIVIDUAL TOURNAMENT HIGHS (EIGHT TEAMS)

Most Points: 89, Mary Jo Lowder (Claflin) 1984
Most Rebounds: 42, Jackie Franklin (Dillard) 1983
42, Stephanie Bonds (Morris Brown) 1984
Most Assists: 29, Donyale Ferguson (FAMU) 1988

INDIVIDUAL TOURNAMENT HIGHS (FOUR TEAMS)

Most Points: 54, Erma Jones (Bethune-Cookman) 1982
Most Rebounds: 30, Jimi Gatlin (SC State) 1980
30, Gloria Boyd (NC A&T) 1981
Most Assists: 16, Brenda Fogle (FAMU) 1981
16, Audry Hayes (SC State) 1980

ALL-TIME RATTLERETTE ROSTER

Players listed do not include first-year players in 1989-90

Anderson, Ava	1984	Mathews, Kia	1981
Baker, Tara	1989	McKay, Darmecia	1988, 89
Bell, Tara	1988	McMillan, Patricia	1988
Boston, Shelly	1989	Miller, Chiquita	1988, 89
Brantley, Wendy	1978	Miller, Patti	1981
Buie, Sylvia	1979	Mims, Traci	1985
Burton, Thursa	1982, 83	Moore, Bobbie	1978
Campbell, Diane	1979, 80, 81	Montgomery, Terri	1988
Carter, Diane	1979, 80, 81	Murrell, Abby	1985
Chennault, Gisla	1983	Myrick, Esther	1984, 85, 86, 87
Cliett, Sharon	1985, 86, 87, 88	Myrick, Gail	1984, 85, 86, 87
Coley, Johnnie Mae	1980	Paramore, Jackie	1987, 88
Crawford, Vera	1980, 81, 82, 83	Powell, Kim	1984
Deans, Deidra	1980, 81	Redman, Erica	1984
Dizon, Arayna	1984	Reilly, Pam	1978, 80, 81, 82
Farmer, Claudette	1978, 79	Rivers, Sybil	1982, 83
Fennell, Carmena	1978	Robinson, Valerie	1981, 82, 83, 84
Ferguson, Donyale	1989	Scarborough, Terrye	1978, 79
Fogle, Brenda	1980, 81, 82	Seay, Valerie	1984, 85, 86
Francis, Bonnie	1979	Shotwell, Latrice	1986, 87, 88, 89
Gay, Sandra	1987	Smith, Alveria	1978, 79
Goodman, LaQuita	1979, 81	Smith, Camille	1989
Gordon, Mary	1981	Smith, Cynthia	1985
Hall, Amelia	1981	Smith, Selina	1986
Hand, Velda	1981	Strickland, Antoinette	1979, 80, 81, 82
Hart, Shelley	1986, 87, 88, 89	Thomas, Jackie	1981
Hayward, Sofia	1978, 79, 80, 81	Thomas, Linda	1979, 80, 81
Hickman, Sharon	1979, 81	Thompson, Estelle	1987
Howard, Martha	1979, 80	Tolbert, Nagene	1979, 80
Hudgins, Rosa	1982, 83, 84, 85	Wade, Rosalind	1984
Innerarity, Polly	1989	Walker, Charlotte	1978, 79
Johnson, Laura	1983, 84	Walker, Denise	1979
Johnson, Lisa	1989	Washington, Candy	1983
Johnson, Pam	1981	Watson, Phonda	1984
Lee, Cynthia	1982, 83, 85, 86	Williams, Cynthia	1984
Littles, Valerie	1984, 85	Williams, Cynthia	1986, 87, 88
Locklear, Sandra	1988, 89	Williams, Evonnie	1980, 81, 82, 83
Luke, Stephanie	1983, 84	Williams, Sabrina	1979, 80
Mack, Mania	1982, 83, 84, 85	Willis, Sherice	1987, 88
Manning, April	1985, 86, 87, 88	Wood, Donna	1980

RATTLERETTES OF THE PAST... ...SUCSESSES IN THE PRESENT

ANTOINETTE STRICKLAND (BEACHAM) FORWARD 1979-1982

Now married with three children, Antoinette "Tree" Strickland Beacham was one of the first standout Rattlerette cagers during the formative years of this highly successful women's program.

A 1982 FAMU graduate in Physical Education, Antoinette says she learned how to be independent and how to survive from her experiences at Florida A&M.

Her most memorable moment as a Rattlerette "was the time we went to regionals (AIAW) and running over people while playing," referring to the Rattlerettes' fast-paced style both offensively and defensively.

She picked Florida A&M because of what she'd heard about it. "I'd always wanted to attend a Black university and play basketball, and I'd heard a lot about Florida A&M."

A native of Gainesville, Florida, Antoinette was preceeded at FAMU by her brother, George, who was a nose tackle on the football team.

Antoinette also sees benefits from participating in sports while attending college. "It builds character and exposes you to new things, other people and places."

The former Rattlerette now resides with her family in Tallahassee, where she works in the City Parks and Recreation Department.

NAGENE TOLBERT (THOMAS) FORWARD 1979-1980

A 1981 graduate of Florida A&M in Elementary Education, the former Nagene Tolbert, is now married with two children living in Georgia.

Thomas selected Florida A&M because she wanted to attend a black university. She said that "Florida A&M prepared me for the working world and it also prepared me for the many difficult things I've had to face."

She also said there were benefits to participating in sports while in college. "It makes you develop into a whole person," Thomas said, "because being a part of a team offers an individual a sense of belonging."

FLORIDA A&M's ATHLETIC LEGACY OF SUCCESS

From the humblest of beginnings in 1899 came one of American college sports' greatest success stories - Florida A&M University Athletics.

It is a program, whose tradition, whose very essence is that of success and excellence. Florida A&M Athletics has spawned great teams, world-class athletes and sports' highly-regarded coaches.

The FAMU Athletic Program sponsors 17 sports: nine (9) men's sports (football, basketball, cross country, swimming, indoor and outdoor track, tennis, baseball and golf) and eight (8) women's sports (volleyball, cross country, swimming, indoor and outdoor track, tennis and softball).

Its' athletic facilities across the board rank with the best in the country for a school its size, from 25,500 seat Bragg Memorial Stadium, to a superb eight-lane all-weather track and field facility, to lighted tennis and softball complexes.

In all, Florida A&M University Athletics is truly an American sports success story. Here is a brief history of the program, highlighting the program's major sports, and about when they began on the campus.

BASEBALL (1899)

Although FAMU has become known for its' great football teams over the years, the advent of athletics on the campus began prior to the 1900's with the sport of baseball.

According to the centennial edition of *THE HISTORY OF FLORIDA A&M UNIVERSITY* (1987), baseball was the most widely-played sport on campus, although it didn't come under faculty direction until 1899, when the late George Sampson became the school's first athletic director.

Dr. Oscar A. Moore and Costa "Pop" Kittles were the sports' most well-known coaches and they were the catalysts for a highly successful program, which produced three major league all-star players, two of whom played in World Series, while the other was a league MVP, as well as shaping a player, who would before his death, go on to become the first and only black executive in major league baseball.

Hal McRae, who finished his stellar major league career with Kansas City's Royals and played with several other organizations including Cincinnati, was the first Rattler to crack the majors to stay to 1970 with Cincy, after a brief stint in the big time in 1968.

Andre "The Hawk" Dawson, currently with the Chicago Cubs, is a five-time all-star outfielder, who started his major league career with the Montreal Expos in 1976, jumped to the Cubs in 1987, ending up as the National League Most Valuable Player and the major league co-leader in home runs (49).

Vincent "Vince" Coleman, became the third former Rattler to make the majors getting called up as a replacement in 1985. But he jumped out of the box, hitting over .400 and stealing bases in St. Louis as they hadn't been stolen since another base stealing demon, Lou Brock played for the Redbirds. Coleman has led the National League in stolen bases every year he's been in the majors (four) and has been in two World Series (1985, 1987). Coleman was a former punter and placekicker at FAMU as well as a baseball player.

The late William "Bill" Lucas carried the FAMU banner to a lofty height in the 1970s, when multi-millionaire Ted Turner made him the first black general manager in major league baseball. His untimely death in 1979 cut short what would have been a brilliant career, but the Jacksonville native left his mark on the Atlanta Braves, as his work bore fruit in 1982, when they won the National League Western Division title, with such names as Dale Murphy and Bob Horner, players acquired by the shrewd and insightful former Rattler.

FOOTBALL (1906)

Although it began on an intramural level in 1899, football was elevated to varsity status in 1906, when George Sampson, along with E.L. Gorden, Chester Cole and J.B. Bragg, formed an athletic committee, which had sponsored intramural games up to that point. Eventually Rattler football teams would win eleven national titles.

In that first year, FAMU opened with two games in one week, playing one on Wednesday and another on Saturday, against Tuskegee and Montgomery (later Alabama State). The program gradually progressed until

1913, when FAMU became a charter member of the Southern Inter-collegiate Athletic Conference (SIAC), of which they remained a member until 1979.

In 1923, J.B. Bragg, who had spent several years at Tuskegee, returned to FAMU and became the school's first official football coach and athletic director under President J.R.E. Lee. Franz A. "Jazz" Byrd became coach from 1925 through 1930, then Bragg resumed coaching duties from 1930 to 1932.

Bragg's son, Eugene, an All-America at FAMU in 1927, took over the reins by 1934, coaching through 1935. He died in 1936, which set the stage for the beginning of the heyday of Rattler Football.

William "Big Bill" Bell, an Ohio State graduate coached from 1936 to 1942, guiding the Rattlers to three national titles (1938, 1940, 1942). After two years under Herman "Buck" Nelson (1943-44), the now legendary golden era of Rattler Football began in earnest under A.S. "Jake" Gaither.

A graduate of Knoxville College, who came to FAMU in 1938 as an assistant to Bell, Gaither's teams (see Gaither Era, page 48) won 203 games, lost 36 and tied four (4) in 25 years from 1945 to 1969.

Gaither's clubs produced 36 All-Americans and nearly as many signed professional contracts. Six times, FAMU grid clubs returned to Tallahassee with national titles (1947, 1953, 1957, 1959, 1961, 1964).

After his retirement in 1970, three coaches: Robert "Pete" Griffin (1970), the late Clarence Montgomery (1971) and James "Big Jim" Williams (1972-73), handled the helm but didn't make much headway.

But the school's next choice: Rudy Hubbard, a former standout tailback and later an assistant coach at Ohio State under the late Woody Hayes, took the reins in 1974 and by 1978 had guided the Rattlers to a 44-11-2 mark and back-to-back titles in 1977 and 1978. By his retirement in 1985, Hubbard had compiled a sterling 83-48-3 record.

Alum Ken Riley, who begins his fourth year at the helm (1986-1988), headlines a horde of standout Rattlers who've advanced to professional football. Riley played 15 years with Cincinnati, starring at cornerback for the Bengals from 1969-83 and finishing among the NFL's best in career interceptions.

Olympian Bob Hayes went on to pro football fame with the Dallas Cowboys as a fleet split end; the late great half-back Willie Galimore, a three-time All-American at FAMU, went on to star with the Chicago Bears before his untimely death in 1964; Henry "Killer" Lawrence, an All-American offensive tackle, starred with the Oakland and Los Angeles Raiders, several times earning All-Pro honors; Greg Coleman, a standout collegiate kicker and hurdler, was one of the NFL's first black punters, latching on with Minnesota's Vikings from 1978 through 1987 and playing 1988 with the Washington Redskins.



Perhaps FAMU's greatest athlete, Robert "Bob" Hayes (22) won Olympic Gold (1964) then won Super Bowl ring with Dallas Cowboys (1972).

FLORIDA A&M's ATHLETIC LEGACY OF SUCCESS

Glen Edwards, a star defensive back on those Steel Curtain World title winners at Pittsburgh, was a running back at FAMU, while fellow runners Hewitt Dixon (Oakland Raiders) and Hubert Ginn (Miami, Oakland) also played professionally.

Currently, FAMU has no less than six players on pro rosters in 1989 and has had at least one player drafted in two of the last three NFL drafts: Gene Atkins, an eighth round pick of the New Orleans Saints (1987), who has become a two-year starter at free safety and halfback Derrick Gainer (1989), and eighth round pick by the Los Angeles Raiders this past April.

A prime example of Rattler Football's rise is their playing facilities. Beginning in the early 1900's in a cow pasture south of the campus, football's on campus home has graduated to a site where the current track and field complex is to the present site on the campus' western boundary, where Bragg Memorial Stadium (named after the father and son Braggs) was built in 1957 with a 10,500 seating capacity. That capacity grew to 13,200 by the 1970s and in 1983 was expanded to the current 25,500.

MEN'S BASKETBALL (1932)

The year 1932 figuratively speaking was the year that Florida A&M basketball came in from the cold. After years of playing outside, the old campus chapel was remodeled, to allow basketball to be played in it.

In 1930, W. McKinley King, Director of Athletics at FAMU, instituted intramural basketball and annual State High School Basketball Tournament, with help from Albert Parks, a member of the college faculty.

Still, intercollegiate competition didn't play on the FAMU campus until 1933, with a clash against Alabama State Teachers' College opening the season. Despite a 36-29 loss, Rattler basketball was born. King's successor to the basketball coaching job, Theodore "Ted" Wright was credited with working to push basketball, both varsity and intramural, onto a higher level of visibility and acceptance on campus.

Since 1950, Rattler basketball teams have posted a 594-306 record with 10 seasons of at least 20 or more wins. Four Rattler teams since 1957 have been invited to NCAA regional tournaments (1957, 1959, 1962, 1978), the last time when former NBA player Clemon "C.J." Johnson (Indiana, Philadelphia, Seattle) played his senior season.

All those previous NCAA appearances have been Division Two tourneys, but the Rattlers have had back-to-back berths in the finals of the Mid-Eastern Athletic Conference (MEAC) Tournament in 1988 and 1989, where a win would have sent them into the Division One Tournament.

Edward "Rock" Ogelsby (1950-72) guided FAMU's teams to three of those Division Two regional berths, 13 SIAC titles and 386 victories against 132 losses for a sparkling .745 winning percentage.

Florida A&M's advent into Division One basketball has only recently begun to exhibit some success, with back-to-back 20-win seasons 22-8 (1987-88) and 20-10 (1988-89). FAMU's best Division One campaign prior to that was the 17-11 record of 1980-81, during which, they bested several of Florida's vaunted Division One programs on the road, winning at Stetson, Jacksonville University and South Florida, while losing to Florida State by less than 10 points.



Althea Gibson

Other than Clemon Johnson, several players have had standout careers at FAMU, like current Florida legislator Alfred (Al) Lawson; Leroy (Spike) Gibson, who went on to an NBA career with Syracuse and Baltimore; All-America scoring ace Waite Bellamy, who became one of the top scorers in Continental Basketball Association (CBA) history; Tommy Mitchell, the present FAMU Director of Alumni Affairs, who played with the famed Harlem Globetrotters; Aldwin Ware, a super talented guard, who led NCAA Division One in steals in 1988.

TENNIS

It is readily apparent that football, which appears to have dwarfed the other sports offerings at Florida A&M as the 20th century has worn on, was by far the younger sibling of such sports as baseball and tennis, which both began in the late 1890's or early 1900's.

Under the guidance of Ellen O. Paige, tennis began play in 1901, with Miss Paige spearheading a drive to make provisions for the sport. Her efforts bore fruit by 1910, when annual intramural tennis tournaments began for women and men.

With a federal grant providing assistance, the school's first tennis courts were built with a clay surface.

From those humbler beginnings came many successful SIAC titlists over the years and more recently, back-to-back (1987, 1988) MEAC championships for the women's tennis team.

But the greatest aspect of the FAMU Tennis program has to be the emergence of a world-class athlete in Althea Gibson, the trailblazing New Jersey native, whose aggressive style led her to become the first Black to win Grand Slam events.

After a 1952 appearance at Wimbledon, Gibson went on to international stardom in earnest by winning the 1956 French Open in Paris, which led her the next year (1957) to wins at Wimbledon (All-England Championships) and at Forest Hills (Unites States Open). Incredibly, she put together a repeat performance at Wimbledon and Forest Hills the following year (1958).

Her efforts led her to be lauded by the Associated Press (AP) as the Woman Athlete of the Year in 1957-58. She was also the winner of the prestigious Babe Zaharias Award, which goes to the top female athlete of the year, for 1957-58.

In 1963, Gibson went on to join the Ladies' Professional Golf Association (LPGA) tour. Without question, Gibson's efforts were groundbreaking in that it made it possible for Blacks, such as Arthur Ashe and current world-ranked black women tennis professionals like Zina Garrison and Lori McNeil for them to gain entry into a very lucrative profession.

WOMEN'S BASKETBALL (1932)

Miss Ellen O. Paige, who is credited with being the mother of tennis at Florida A&M, was also one of the originators of basketball at Florida A&M in the early 1930's.

But it was not until the late 1970s, along with the advent of the federally-mandated Title IX, which said that women had to be given intercollegiate athletic programs on an equal basis with men, that women's basketball began to flourish.

Former Rattler cager Mickey Clayton, accepted the unenviable task of building a women's basketball program for the 1977-78 season from coeds recruited on campus. That first season ended in a 4-15 finish, but as the old proverb says "there was nowhere to go but up."

In fact, Clayton and Co. put together 10 straight winning seasons, during which they not only led the State of Florida in attendance for women's college basketball, but they ascended the ladder from NCAA Division Two to Division One, eventually ranking among the nation's leaders in home attendance.

Six Rattlerettes have earned All-America honors in the past 12 years, including Cynthia Lee (1983, 1986), Sybil Rivers (1982), Rosa Hudgins and Valerie Seay (1984), Cynthia Williams (1987) and Shelly Boston (1989).

Guard April Manning, who finished her career during the 1987-88 season, finished second in the nation (132) in steals, as the Rattlerettes put together a 21-9 finish, their second 20-win season in the last four years.

Clayton has put together an impressive 194-134 record in 12 seasons and has pulled off this feat against some tall odds, like limited budgets and recruiting against the powers of women's basketball.

Yet, Clayton hasn't been afraid of taking on the big names, having logged outside against Louisiana Tech, Auburn, Mississippi State, Georgia, Miami (Fla.), Minnesota, New Orleans, Alabama, South Carolina, South Alabama, Texas Tech, Vanderbilt, Michigan and Old Dominion during his tenure.

FLORIDA A&M's ATHLETIC LEGACY OF SUCCESS

TRACK AND FIELD (1940s)

The FAMU track and field program has been overshadowed like most other sports by football, but has had its claim to the limelight over the years with outstanding teams and outstanding individuals.

Without question, one of America's greatest individual athletes was Jacksonville-born Robert "Bob" Hayes, who ran a 9.2-second time in the 100-yard dash at the University of Miami in 1962, tying the world record in that event.

Tabbed the "World's Fastest Human," Hayes won NCAA titles in 1963 and 1964 in the 200-meter dash, then with the world watching sailed to Tokyo, Japan on the United States' Olympic team, where he won two gold medals in the 100-meter dash and as a member of the 4-by-100 meter relay team.

Hayes went on to win another world title, with the 1971 Dallas Cowboys, who won the NFL title over Miami's Dolphins, 24-3 in January of 1972.

In 1972, Reynaud "Rey" Robinson set a world record in the 100-meter dash with a 9.9 clocking, going on to a berth on the 1972 United States Olympic team in Munich, Germany.

Former football All-America Robert "Pete" Griffin, coached the FAMU track team to seven (7) straight SIAC titles from 1955 through 1962 and was the mentor of Bob Hayes.

Current coach Bobby E. Lang took over the reins from Griffin in the mid-1960's, winning eight SIAC crowns (1966, 1967, 1968, 1969, 1970, 1972, 1976 and 1979), while turning in championships performances in the Mid-Eastern Athletic Conference in 1980, 1982, 1988 and 1989 for men's track and 1987 and 1989 in women's track.

In 1968, Lang's 440-yard relay team of Major Hazelton, Gene Milton, Jim Ashcroft and Nathaniel James pulled off the singular feat of retiring the J.C. Patterson Cup, given by the sponsors of the Penn Relays for winning the race three straight years at that nationally-reknowned event in Philadelphia.

In 1980, Lang's indoor mile relay team set a then NCAA record with a 3:12.09 clocking, but perhaps his biggest contribution to the tradition of success that has been FAMU track and field was his almost single-handed ramrodding of a measure through the Florida Legislature which resulted in the all-weather track and field complex which sits behind the Gaither Athletic Center.

That complex, which is the home of the annual FAMU Relays in March and the Mid-Eastern Athletic Conference Outdoor Championships in April, replaced the old clay oval in Bragg Memorial Stadium, on which Hayes and Robinson among others ran during the early years of the FAMU Relays.

The Relays have become one of the premier early-season outdoor track events in the Southeast, attracting teams from the Northeast, Midwest as well as Deep South. Such former track greats as Ralph Boston, Wilma Rudolph and Edwin Moses have participated in the Relays over the years, a tribute to the legendary status of Florida A&M's track and field program.

Women's track at Florida A&M has had its moments as well over the years, but none as lofty as in 1981 at the Association of Intercollegiate Athletics for Women's Division Two Track and Field Championships, when six (6) young ladies earned All-America honors including Pat



FAMU Football had humble beginnings like all great programs and this photo from the pre-Bragg Stadium era shows a game on the hill where the present track and field complex stands. Bragg Stadium was built in 1957, west of the site pictured above.

McGugan, Pam Porter, Pam Oliver, Bertha Daniels, Claudia McGriff and Alma Rogers.

WOMEN'S VOLLEYBALL (1981)

Rattlerette Volleyball began in 1981, posting a 13-11 record for a first-year effort, but not until 1985 did the program return to winning ways, with a trio of 20-plus-win records in their last four campaigns.

Stability came to the program in 1985, when Frances Knight took the reins of the program, guiding them to a 23-16 mark, their first winning season since the initial campaign.

Coach Knight departed just prior to the 1986 season and the team's fortunes sagged (11-22), but FAMU hired veteran coach Germaine McAuley, who came in in 1987, leading the Rattlerettes to a 28-15 mark.

But Coach Knight returned to the scene in 1988, when McAuley resigned to take a new job and the Knight magic, with help from one of her former players, Pamela Woulard, was back, as the Rattlerettes rolled to a 26-8 finish, winning the Mid-Eastern Athletic Conference title.

Without question, the most outstanding Rattlerette during this brief era of women's volleyball at FAMU was South Florida (Hollywood) native Kimberly Funchess. Funchess, who walked on the Rattlerette volleyball team in 1985, immediately earned a starting role.

She was the only four-time All-New South-Conference selection (1985, 1986, 1987, 1988) in league history in any of the league's sports and will most likely be its only three-time Most Valuable Player (1986, 1987, 1988).

IN SUMMARY

The sports detailed above and on the preceding pages have been the most visible of the school's sports over the years. That doesn't demean the swimming and golf teams which have carried proudly the banner of Florida A&M Athletics, but those highlighted sports help make the strong the case that FAMU Athletics truly has a tradition of success.



William "Bill" Lucas



FLORIDA A&M — THE UNIVERSITY

Florida A&M University, founded on October 3, 1887 as the State Normal College for Colored Students, began classes with fifteen students and two instructors. Its destiny: to become an institution of higher learning striving toward even greater heights of academic excellence. Today, Florida A&M University is one of nine institutions in Florida's State University System, and excellence—"excellence with caring"—remains its goal.

Leading the State Normal College through its infancy were two distinguished citizens and educators. They were: Thomas DeSaille Tucker, an outstanding attorney from Pensacola; and Thomas Van Renasaler Gibbs, a state representative from Duval County, as Tucker's top assistant.

In 1891, the school received a share of the \$7,500 allocated to states for agricultural and mechanical education, and it was then that President Tucker initiated his plan for growth. The school was moved from Copeland Street (now the site of Florida State University) to its present site and its name changed to the State Normal and Industrial College for Colored Students.

In 1905, management of the school was transferred from the Board of Education to the Board of Control. This event was significant because it officially designated the school as an institution of higher education.

In 1909, the name was changed to Florida Agricultural and Mechanical College for Negroes (FAMC). The following year, with an enrollment of 317 students, the college awarded its first degrees.

During the years 1924-44, under the administration of John Robert Edward Lee, Sr., Florida A&M University acquired much of the physical and academic image it has today. Buildings were constructed; more land was purchased; more faculty was hired; courses were upgraded; and accreditation was received from several state agencies. In 1944, Florida A&M has constructed 48 buildings, has accumulated 396 acres of land, and had 812 students and 122 staff members. In 1949, under the guidance of William H. Gray, Jr. (1944-49) expansion, along with reorganization, continued and the school had obtained an Army ROTC unit and student enrollment had grown to more than 2,000.

But perhaps, the greatest achievement was the elevation of the school to university status. In 1951, the school's name was changed from Florida Agricultural and Mechanical College for Negroes to Florida Agricultural and Mechanical College. And in 1953, by legislative action, the school was renamed Florida Agricultural and Mechanical University.

During the years 1950-68, the school experienced its most rapid growth. Twenty-three buildings were erected; the hospital (now Foote-Hilyer Administration Center) was completed; staff increased by more than 500; the four-quarter plan (now the semester plan) was implemented and the school became the first Negro institution to become a member in the Southern Association of Colleges and Schools. Enrollment increased to over 3,500.

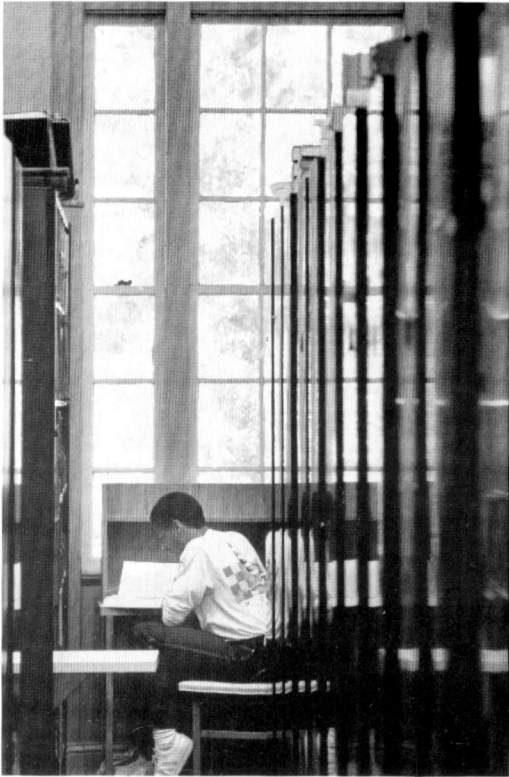
The 1970's brought further growth and development to Florida A&M University; in 1971, FAMU was recognized as a full partner in the nine-university, public higher education system in Florida.

The 1980's served as a model for productive development for Florida A&M University. Under the Walter L. Smith administration (1977-85), the University grew to eleven schools and colleges, and a Division of Graduate Studies, Research and Continuing Education. In 1984 the University was granted the authority to offer its first Doctor of Philosophy degree, the Ph.D. in Pharmacology. The '80's also saw the expansion of the Gaither Athletic Center—the construction of a new Women's Athletic Complex, a track, an olympic pool, men and women's weight training rooms, and softball and baseball fields. Bragg Memorial Stadium was renovated and expanded to provide seating for some 25,500 spectators and a modern field house was erected. Construction and renovation projects amounted to more than \$34 million.

At present, under the administration of Frederick S. Humphries (1985), enrollment is more than 5,000 and the University is expected to grow on beyond the Centennial Year, 1987, into its second century.

FAMU can credit much of its present academic stature to the leadership of its eight distinguished presidents: Thomas DeSaille Tucker (1887-1901); Nathan B. Young (1901-1923); John Robert Edward Lee, Sr. (1924-1944); William H. Gray (1944-1949); George W. Gore, Jr. (1950-1968); Benjamin L. Perry, Jr. (1968-1977); Walter L. Smith (1977-1985); Frederick S. Humphries (1985-present); and acting presidents W.H.A. Howard (1934-44); J.B. Bragg (1944); and H. Manning Efferson (1949-1950).

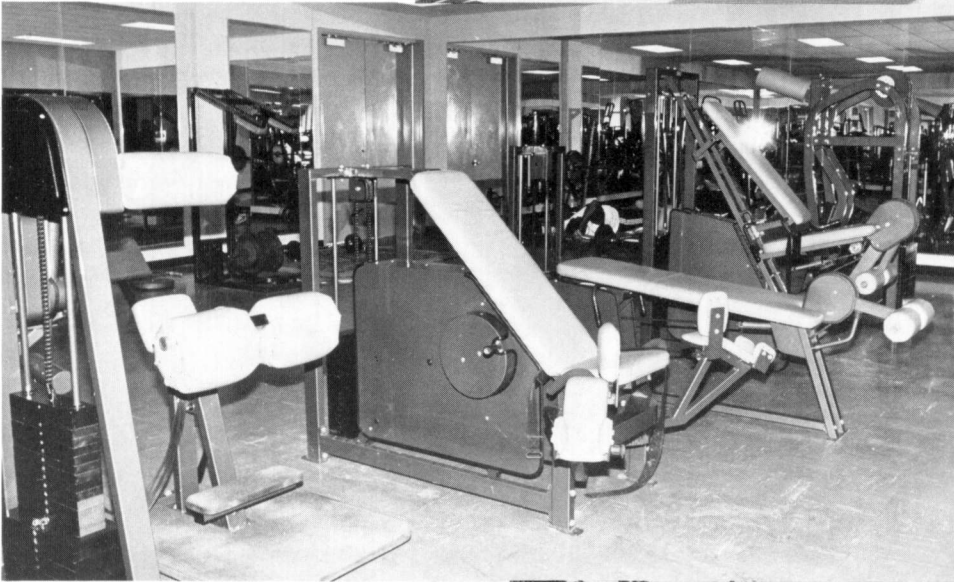
Today, Florida A&M University stands at the threshold of an era of promise unsurpassed since the day in October, 1887 when it opened its doors with fifteen students and two instructors.



COLEMAN LIBRARY



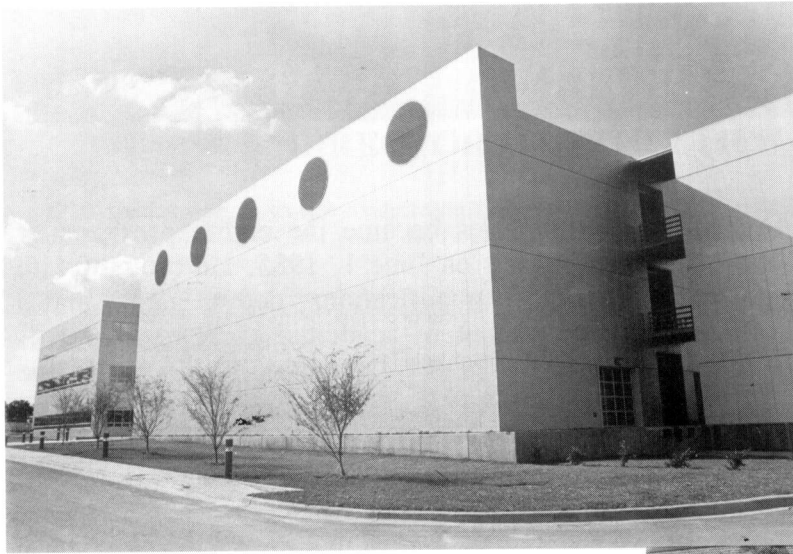
SCHOOL OF BUSINESS AND INDUSTRY



WEIGHT TRAINING ROOM



COLLEGE OF PHARMACY



SCHOOL OF ENGINEERING



SCHOOL OF ARCHITECTURE



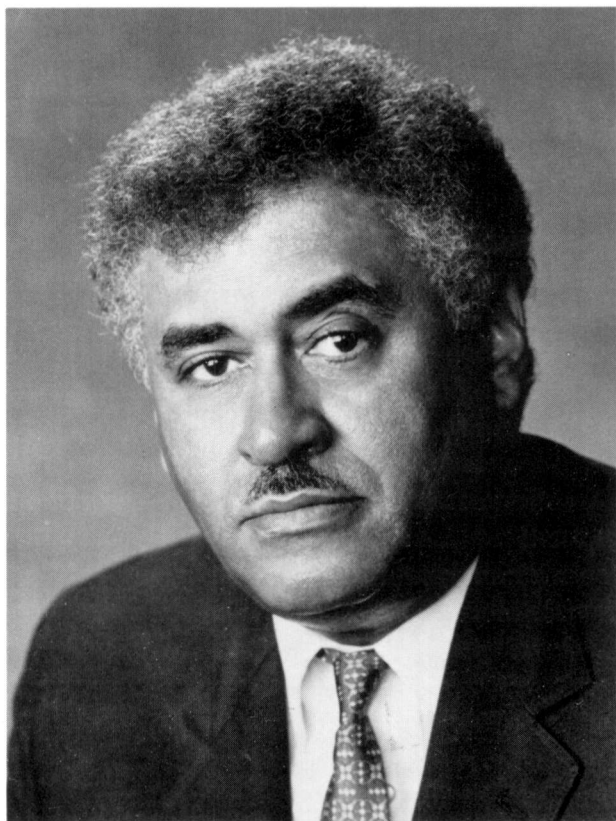
BRAGG MEMORIAL STADIUM



CARNEGIE LIBRARY — BLACK ARCHIVES

DR. FREDERICK S. HUMPHRIES

EIGHTH PRESIDENT OF FLORIDA A&M



Frederick S. Humphries became the eighth president of Florida A&M University on June 1, 1985. He brought with him vision, experience, qualifications, determination and a commitment to the pursuit of academic excellence — **EXCELLENCE WITH CARING!** Dr. Humphries' road to the presidency of Florida A&M is dotted with many years of experience and preparation. The Apalachicola, Florida A&M University (1957) and the Ph.D. in physical education from the University of Pittsburg, Pennsylvania (1964). He has been honored on two separate occasions in 1986 by the University of Pittsburg—once by the faculty of the College of Arts and Sciences as a distinguished alumnus on the 100th anniversary of the awarding of the University's first Ph.D., in 1886. He later received the University's Bicentennial Medal of Distinction on the occasion of Pitt's 200th anniversary celebration.

He started his professional career as a commissioned officer in the United States Army. Subsequently, he was a professor of chemistry at Florida A&M University. In 1968, Dr. Humphries joined the staff of the Institute for Services to Education and has held the following directorships with that agency: Innovative Institutional Research Consortium; Summer Conferences; Thirteen-College Curriculum Program; Three Universities Graduate Programs in the Humanities; Knoxville College Study of Science Capability of Black Colleges; Inter-

disciplinary Program and Two-Universities Graduate Programs in Science. He was named president of Tennessee State University, Nashville, in 1974 and held that position until being appointed to lead his alma mater in 1985.

Dr. Humphries has made significant contributions to higher education in general and higher education for Blacks specifically through his service on many boards, committees and commissions, to include: External Evaluator of Title III Programs; Minority Representation in Graduate Schools Special Committee of the United Negro College Fund Pre-Medical Program, Fisk University; and the Special Committee on Minority Participation in Graduate and Professional Education, Institute for Services to Education. He was appointed by Governor Bob Graham to the Apalachicola Bay Area Resource Planning and Management Committee, and serves as a member of the Commission on the Future of the South, the Science and Technology Advisory Committee of NAFEO, the White House Science and Technology Advisory Committee and the State Board of Education Advisory Committee on the Education of Blacks in Florida, which he chairs.

His awards and honors include: Meritorious and Distinguished Achievement in Education Award, Nashville Chapter, Alpha Phi Alpha Fraternity, Inc.; Distinguished Service to the Advancement of Education for Black Americans Award, Institute for Services to Education; Outstanding Citizen of the Year Award, Greater Nashville Chapters of Omega Psi Phi Fraternity, Inc.; Human Relations Award, Metropolitan Human Relations Commission, Nashville Davidson County, Tennessee; Outstanding Service to the State, Certificate of Appreciation, Governor of Tennessee and Certificate of Appreciation, U.S. Department of Health and Human Services, Office of Human Development Services.

As Florida A&M University moves to its second century in the pursuit of academic excellence—**EXCELLENCE WITH CARING**, Dr. Humphries is committed to providing the leadership which will help Florida A&M become the great institution it is destined to be.

ATHLETIC ADMINISTRATION

DR. WALTER REED DIRECTOR OF ATHLETICS

After a nationwide search was conducted in 1988, Florida A&M University President Dr. Frederick S. Humphries named Dr. Walter Reed, previously of Jackson State (Miss.) University, as Director of Athletics.

Since taking the helm, Reed has applied varied experiences in education, coaching and administration to the task of continuing the revitalization of Florida A&M's athletic program as pledged by President Humphries upon his arrival in 1985.

A native of the State of Mississippi, the Meridian-born Reed is a graduate of Jackson State University, where he received a degree in Health, Physical Education and Recreation. He obtained his master's in Physical Education from Indiana University in 1961 and was awarded his doctorate in Education Administration from the University of Miami (Fla.) in 1973.

Prior to assuming the Director of Athletics role at Florida A&M, Reed had filled a similar position at Jackson State University, from 1977 until June 30 of the year 1988. Before becoming Athletic Director at JSU, Reed was an assistant professor of Health, Physical Education and Recreation and director of Intramurals (1974-77).

The personable Reed began his professional career in 1955 as a teacher and coach on the high school level in Mississippi, later gaining valuable work experience as coach, teacher and administrator on both the high school and collegiate levels not only in his home state but in Florida. He returned to JSU in 1974.

The new FAMU Athletic boss is President of the National Steering Committee of the NCAA; a member of the National Association of Collegiate Directors of Athletics (NACDA), the American Association of Health, Physical Education and Recreation and the National Association of Intramural Directors.

He serves on advisory committees for the Honda-Broderick Cup and Awards, which goes to the most outstanding female athletes in 10 sports and the prestigious National Invitational Tournament (NIT), screening potential teams in the South region.

Reed is also a member of the NCAA Division 1-AA Football Committee, which conducts the NCAA Division 1-AA Top 20 rankings as well as selects the 16-team tournament field for the Division 1-AA championship.

A 1984 inductee into the Jackson State University Sports Hall of Fame, Reed was twice named Athletic Director of the Year (1982, 1983) in the Southwestern Athletic Conference (SWAC). He was a member of the NCAA Division 1-AA Football Advisory Committee (1978-85), before becoming a member of the Division 1-AA committee proper in 1986.

During Reed's tenure as Director of Athletics at JSU, the football team had made six (6) 1-AA playoff appearances and is ranked among the winningest programs in 1-AA history.

The JSU Athletic program is one of the strongest collegiate programs in the NCAA, having produced such professional football players as NFL All-Time Rushing Leader Walter Payton and former All-Pro defensive back Lem Barney; current NBA scoring ace Purvis Short, formerly with Golden State, now with Houston and current major league baseballers Dennis "Oil Can" Boyd, pitcher for the Boston Red Sox and outfielder Curtis Ford of the St. Louis Cardinals.

Reed and his wife Martha, are the parents of three children—Walter A., Clifton and Kathy.



HERBERT REINHARD, III DIRECTOR OF MARKETING and DEVELOPMENT

Reinhard begins his 11th season as a member of the FAMU Athletic Administration and his fourth year as the program's Director of Marketing and Development.

Responsible for securing increased ticket sales in the corporate arena, acquiring corporate sponsorship for athletic events, coordinating production of the school's television highlight programs and radio network, plus supervising game program sales and events promotions, the 1980 FAMU graduate maintains a busy schedule.

A former star placekicker on the 1977 and 1978 Rattler championship football teams, Reinhard has a master's degree from Florida State in Public Relations and is quite active in local civic organizations.

Reinhard served his first seven years in athletic administration as the school's Sports Information Director for Women's Athletics, where many of his successful promotional and publicity schemes were first put to use.



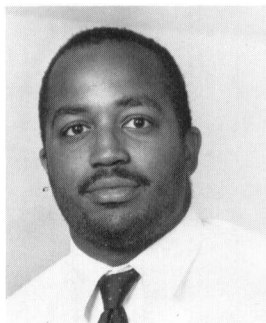
CYNTHIA DUPONT-JONES COORDINATOR OF ATHLETIC OPERATIONS

Ms. Dupont-Jones starts her third year as a member of the athletic department staff, serving as the department's Coordinator of Athletic Operations.

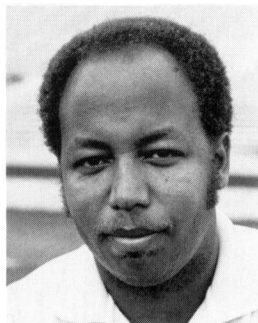
In her current role, the Plant City, Florida native works closely with Dr. Reed in the general administration of athletics, while coordinating event and fiscal operations by working with the business, ticket and concession managers.

A graduate of nearby Florida State University, Ms. Dupont-Jones holds a degree in Accounting, which she used to the maximum in 1987 as the Athletic Business Manager. She spent the six previous years as an internal auditor, five of those Florida A&M.

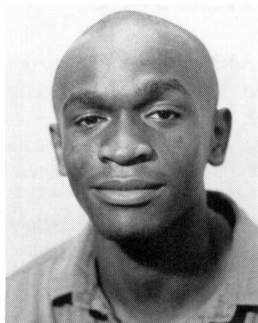
ATHLETIC SUPPORT STAFF



ANDRA BARNES
Fiscal Management Asst.



ARNOLD BELL
Physical Therapist



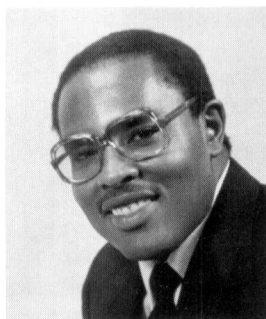
REGGIE BUTLER
Student Asst. SID



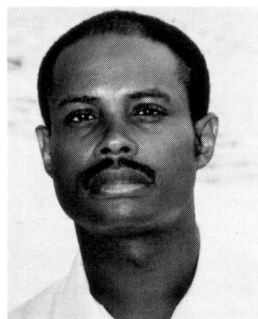
TYRONA CLARK
Student Asst. SID



MRS. LILLIAN HAGINS
Administrative Asst.



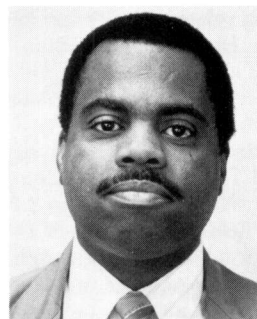
ALVIN HOLLINS
Sports Information
Director



PHILLIP HORTON
Coordinator of
Sports Medicine



VIVIAN POPE
Director of Athletic
Ticket Sales



MELVIN ROBERTS
Athletic Academic
Advisor



GEORGE THOMPSON
Chief Equipment
Manager

ATHLETIC DIRECTORY

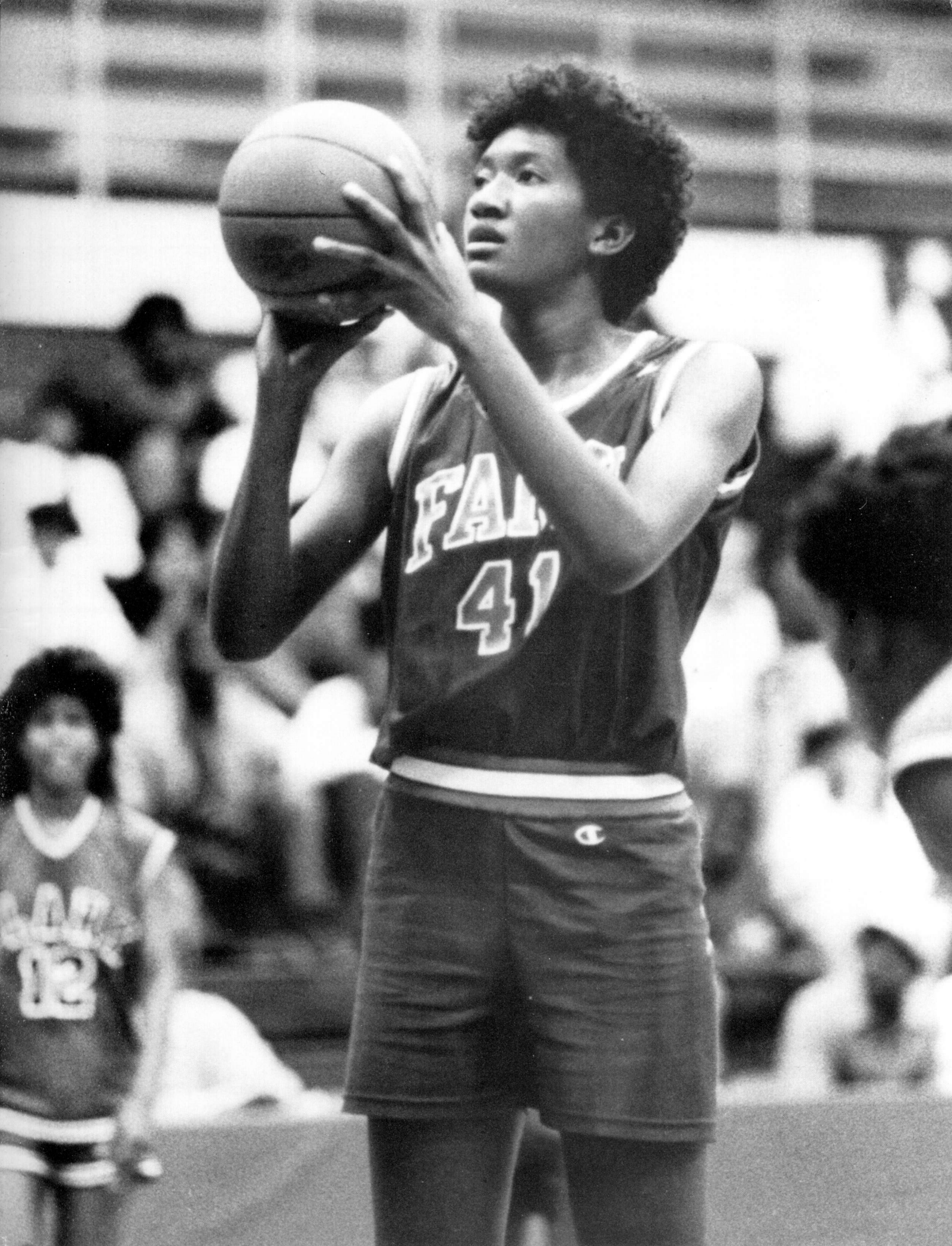
ATHLETIC ADMINISTRATION

Dr. Walter Reed, Athletic Director	599-3868/3878
Mrs. Lillian Hagins, Administrative Assistant	599-3868/3878
Athletic Business Office	599-3873
Cynthia D. Jones, Coordinator of Athletic Operations	599-3873
Alvin Hollins, University SID	599-3206
Herb Reinhard, III, Marketing and Development	599-3028
Vivian Pope, Director of Athletic Ticket Office	599-3141
Mrs. Mary Lee, Athletic Secretary	599-3206
Athletic Department FAX Machine	599-3200
Melvin Roberts, Academic Advisor	599-3272

COACHING STAFF

(Head Coaches Only)

Ken Riley, Head Football Coach	599-3723
Football Fieldhouse (All Football Staff)	599-3721/3722
Willie Booker, Head Men's Basketball Coach	599-3264
Bobby E. Lang, Track Coach (Men/Women)	599-3365
Robert Mungen, Men's Tennis Coach	599-3405
Robert Lucas, Baseball Coach	599-3202
Pamela Reilly, Women's Volleyball Coach	599-3272
Gerald Cooper, Women's Tennis Coach	599-3272
Mickey Clayton, Women's Basketball Coach	599-3272
Women's Softball Office	599-3272
Philip Horton, Head Athletic Trainer	599-3720
George Thompson, Equipment Manager	599-3868
George Ellis, Swimming Coach	599-3868





1989-90 RATTLERETTE BASKETBALL TEAM - Back Row (L to R) - Tara Baker, Sherrall Bass, Donyale Ferguson, Telena Courseault, Sandra Locklear, Camille Smith, Kaali Cohen and Sherrie Barnes. Front Row (L to R) - Shelly Boston, Maia Clayton, Demetria McMillan, Polly Innerarity and Sonja Bentley.